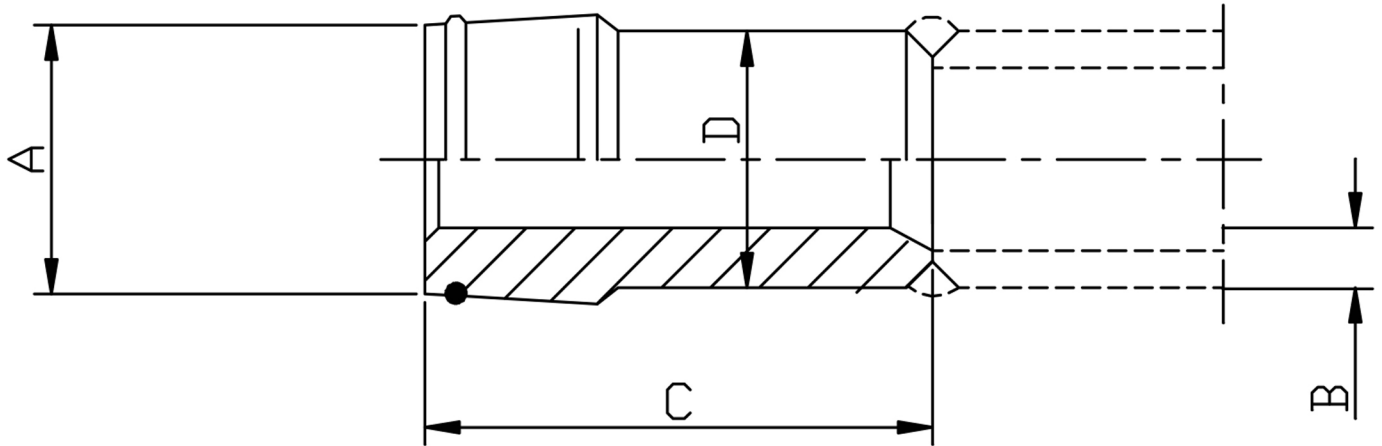


WELD NIPPLE WITH O-RING



TUBE D	TUBE B	PART No	A	O-RING	C	PN BAR	Kg 100
6	1.5	WN0615	3	4.0 X 1.5	31.0	498	0.5
8	1.5	WN0815	5	6.0 X 1.5	31.0	372	0.5
10	2.0	WN1020	6	7.5 X 1.5	32.5	498	1.5
12	1.5	WN1215	9	9.0 X 1.5	32.5	330	1.5
12	2.0	WN1220	8	9.0 X 1.5	32.5	426	1.9
14	2.0	WN1420	10	10.0 X 2.0	40.0	372	2.2
15	2.0	WN1520	11	12.0 X 2.0	36.0	350	2.7
16	2.0	WN1620	12	12.0 X 2.0	38.5	330	3.1
16	3.0	WN1630	10	12.0 X 2.0	38.5	472	4.1
18	2.5	WN1825	13	15.0 X 2.0	37.0	363	5.0
20	2.0	WN2020	16	16.3 X 2.4	44.5	270	5.4
20	3.0	WN2030	14	16.3 X 2.4	44.5	389	6.2
22	2.5	WN2225	17	20.0 X 2.0	38.5	303	7.8
25	3.0	WN2530	19	20.3 X 2.4	49.5	318	8.9
25	4.0	WN2540	17	20.3 X 2.4	49.5	411	11.1
28	3.0	WN2830	22	26.0 X 2.0	41.5	287	12.5
30	4.0	WN3040	22	25.3 X 2.4	52.0	350	14.0
30	5.0	WN3050	20	25.3 X 2.4	52.0	426	16.6
35	4.0	WN3540	27	32.0 X 2.5	47.0	305	17.1
38	4.0	WN3840	30	33.3 X 2.4	56.5	283	19.5
38	5.0	WN3850	28	33.3 X 2.4	56.5	346	23.6
42	3.0	WN4230	36	38 X 2.5	47.0	17	27.0

*316Ti Stainless Steel

*Pressures up to 630 BAR

*Dimensions to EN ISO 8434-1/DIN 2353

*Sizes 6mm to 42mm

DIMENSIONS SUBJECT TO CHANGE, PLEASE CONTACT US IF CRITICAL