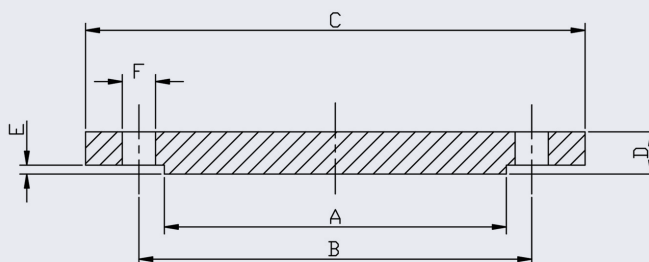
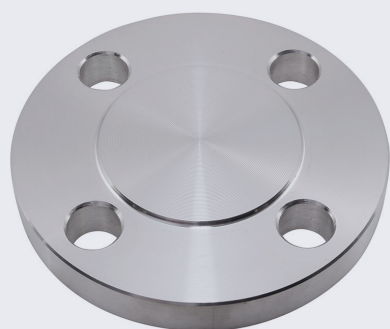


ANSI 150LB Blind Flange (316/L and 304/L)



This flange conforms to ANSI/ASME B16.5 and is available in 316/L or 304/L.

Full material traceability is available and 3.1B certification can be provided upon request.

Bolt kit sizes shown in the above table are for bolting two flanges together including the thickness of a gasket.

If using a wafer pattern valve, longer bolts will be required.

PIPE SIZE	DN	CODE 316	CODE 304	A	B	C	D	E	F	BOLT	KG EACH	BOLT KIT CODE
1/2	15	F150B0.5	F150B0.5-304	34.9	60.3	88.9	11.1	1.6	15.9	4XM12	0.40	BK02
3/4	20	F150B0.75	F150B0.75-304	42.9	69.8	98.4	12.7	1.6	15.9	4XM12	0.70	BK03
1	25	F150B1.0	F150B1.0-304	50.8	79.4	107.9	14.3	1.6	15.9	4XM12	0.90	BK03
1.25	32	F150B1.25	F150B1.25-304	63.5	88.9	117.5	15.9	1.6	15.9	4XM12	1.30	BK03
1.5	40	F150B1.5	F150B1.5-304	73	98.4	127	17.5	1.6	15.9	4XM12	1.60	BK03
2	50	F150B2.0	F150B2.0-304	92.1	120.6	152.4	19	1.6	19.0	4XM16	2.60	BK04
2.5	65	F150B2.5	F150B2.5-304	104.8	139.7	177.8	22.2	1.6	19.0	4XM16	4.10	BK06
3	80	F150B3.0	F150B3.0-304	127	152.4	190.5	23.8	1.6	19.0	4XM16	5.00	BK06
4	100	F150B4.0	F150B4.0-304	157.2	190.5	228.6	23.8	1.6	19.0	8XM16	7.10	BK07
5	125	F150B5.0	F150B5.0-304	185.7	215.9	254	23.8	1.6	22.2	8XM20	9.00	BK10
6	150	F150B6.0	F150B6.0-304	215.9	241.3	279.4	25.4	1.6	22.2	8XM20	11.80	BK10
8	200	F150B8.0	F150B8.0-304	269.9	298.4	343	28.6	1.6	22.2	8XM20	21.00	BK12
10	250	F150B10.0	F150B10.0-304	323.8	362	406	31.8	1.6	25.4	12XM22	30.00	BK13
12	300	F150B12.0	F150B12.0-304	381.0	431.8	482.6	31.8	1.6	25.4	12XM22	47.00	BK13
14	350	F150B14.0	F150B14.0-304	412.8	476.3	533.4	35.1	1.6	28.4	12XM24	59.2	BK19
16	400	F150B16.0	F150B16.0-304	469.9	539.8	596.9	36.6	1.6	28.4	16XM24	62.2	BK19

**** Dimensions subject to change - Please contact us if critical ****

Other products you might like...

We also keep Screwed, Slip-on and Weld Neck Flanges to this standard.



We also keep Gaskets to suit all our flanges in both EPDM and Non-Asbestos materials.

