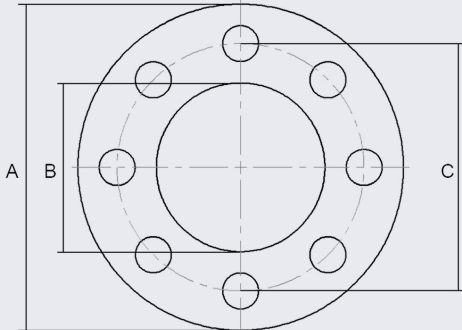


PIPE SIZE (N.B)	DN	CODE	C	A	B
1/2	15	GE0.5150FF3	60.3	88.9	22.3
3/4	20	GE0.7515FF3	69.8	98.4	27.7
1	25	GE1.0150FF3	79.4	107.9	34.5
1.25	32	GE1.25150FF3	88.9	117.5	43.2
1.5	40	GE1.5150FF3	98.4	127	49.5
2	50	GE2.0150FF3	120.6	152.4	62
2.5	65	GE2.5150FF3	139.7	177.8	74.7
3	80	GE3.0150FF3	152.4	190.5	90.7
4	100	GE4.0150FF3	190.5	228.6	116.1
5	125	GE5.0150FF3	215.9	254	143.8
6	150	GE6.0150FF3	241.3	279.4	170.7
8	200	GE8.0150FF3	298.4	343	221.5
10	250	GE10.0150FF3	362	406	276.4
14	350	GE14.0150FF3	476.3	533.4	359.1
16	400	GE16.0150FF3	539.8	596.9	410.5

**\*\* Dimensions subject to change - Please contact us if critical \*\***



## Material data sheet

Material Reference	2349
Colour	Black
To Specification	Commercial

Basic Properties	Value	Test Method	Unit
Base Polymer Type	SBR/EPDM		
Indentation Hardness	60 Shore A -4 +5	ASTM D2240 00	Degrees
Specific Gravity	1.5 +/- 0.05	ASTM D792	g/cm <sup>3</sup>
Tensile Strength - Minimum	3	ASTM D412	Mpa
Elongation @ Break - Minimum	250	ASTM D412	%
Minimum Continuous Working Temperature	-20		°C
Maximum Continuous Working Temperature	70		°C
Maximum Intermittent Working Temperature	90		°C
Compression Set 70 Degrees 22 Hours	30% Max.	ASTM D395 Method B	%
Insertion Type	None		

Guidelines for Use (It is the customers responsibility to ensure suitability of use)	
Food Use Suitability	Not Recommended
Indentation Hardness	Moderate
Ozone Weather Resistance	Moderate
Flame Retardency	Not Recommended
General Purpose	Not Recommended