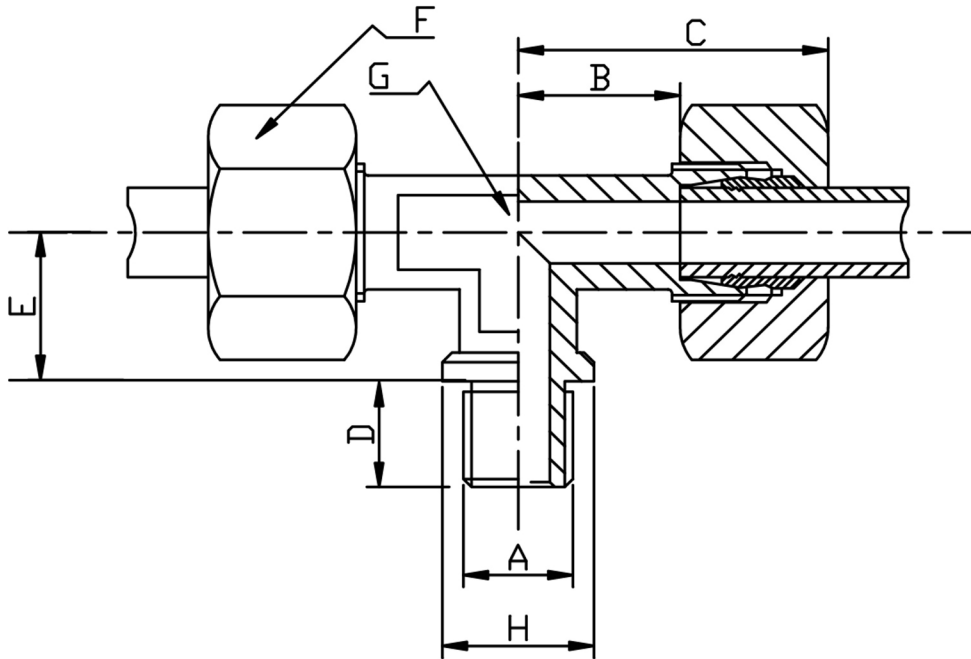


MALE BRANCH TEE BSPP



TUBE	A BSPP	PART No	B	C	D	E	F	G	H	PN BAR	Kg 100
LIGHT SERIES											
22	3/4	MBT22L34BSPP	27.5	44	16	26	36	27	32	160	36.9
28	1	MBT28L1BSPP	30.5	47	18	30	41	36	39		61.0
35	1-1/4	MBT35L114BSPP	34.5	56	20	34	50	41	49		84.9
42	1-1/2	MBT42L112BSPP	40.0	63	22	39	60	50	55		142.2
HEAVY SERIES											
20	3/4	MBT20S34BSPP	26.5	48	16	26	36	27	32	400	45.5
25	1	MBT25S1BSPP	30.0	54	18	30	46	36	39		37.5
30	1-1/4	MBT30S114BSPP	35.5	62	20	34	50	41	49	315	121.5
38	1-1/2	MBT38S112BSPP	41.0	72	22	39	60	50	55		174.0

*316Ti Stainless Steel

*Pressures up to 630 BAR

*Dimensions to EN ISO 8434-1/DIN 2353

*Sizes 20mm to 42mm

DIMENSIONS SUBJECT TO CHANGE, PLEASE CONTACT US IF CRITICAL