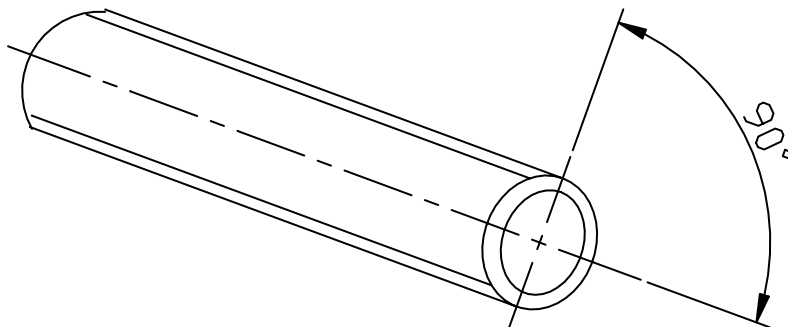
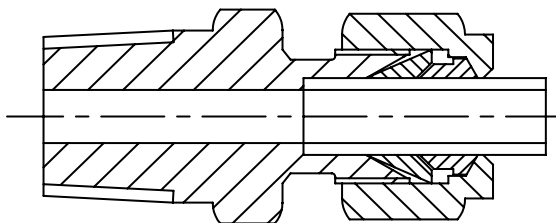


ASSEMBLY INSTRUCTIONS

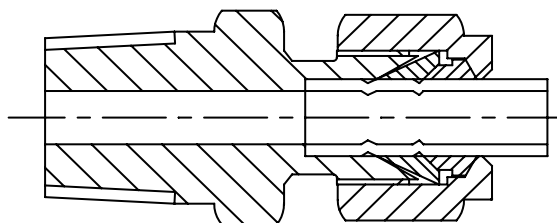
1. Cut the tube to the required length making sure ends are square and all burrs removed.



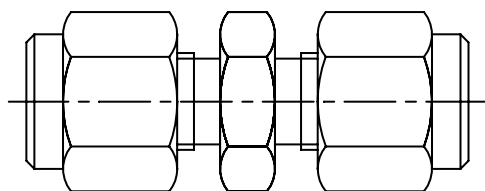
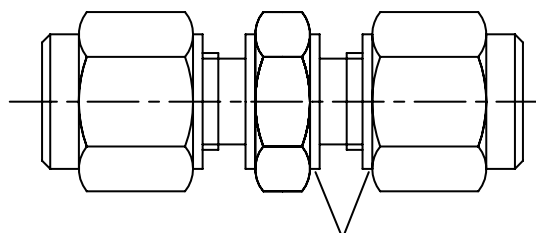
2. Insert the tube into the fitting and ensure that it is pushed firmly onto the stop inside.



3. Make sure the nut is finger tight and then turn the nut another 1-1/4 turns.



4. Fittings can be assembled and disassembled many times. On reassembly tighten the nut until finger tight, then tighten with a wrench until a rise in torque is felt. Finally tighten another 1/4 turn

IDENTIFICATION OF FRACTIONAL AND METRIC FITTINGS**FRACTIONAL****METRIC****MACHINED COLLAR ON NUT AND BODY**