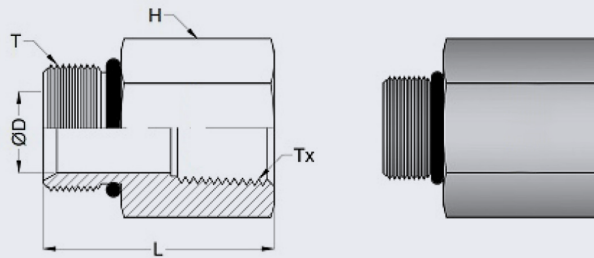
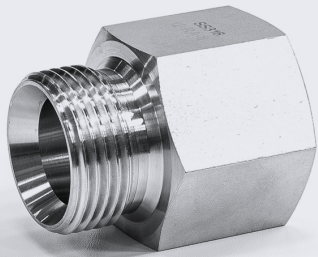


Equal Adaptor - Female x Male (BSPP) 316



- NERO's range of Equal Adaptors are available in BSPP x NPT thread form to allow more flexibility when joining fittings together with different threads
- Made from hexagon bar with a flat sealing face on the female end
- Pressure rating up to 200 BAR
- Can be supplied with 2.2 certificate of conformity - upon request
- BSPP threads are to ISO 228/1
- NPT threads are to ANSI/ASME B1.20.1
- At sizes 1/8" to 1/2" the fitting is a Gauge Adaptor

SIZE (Tx) BSPP	SIZE (T) BSPP	PRODUCT CODE	L	ØD	H.INCH	KG EACH
1/8	1/8	AFM0202P	26.4	4.8	9/16	0.022
1/4	1/4	AFM0404P	28.6	5.6	3/4	0.047
3/8	3/8	AFM0606P	32.6	6.6	7/8	0.066
1/2	1/2	AFM0808P	38.1	11.1	1.1/16	0.16
3/4	3/4	AFM1212P	55.4	15.7	1.5/16	0.23
1	1	AFM1616P	62.5	22.4	1.5/8	0.30

**** Dimensions subject to change - Please contact us if critical ****

Other products you might like...

We stock a wide range of Hydraulic Fittings to suit your requirements



We also keep Reducing versions of this fitting + Bonded Washers in our Hydraulic range

