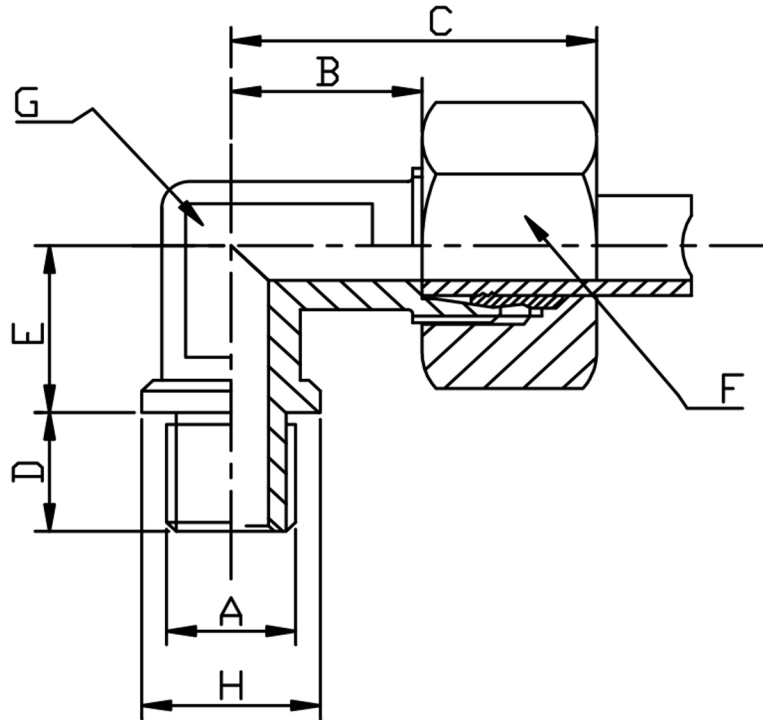


MALE STUD ELBOW BSPP



TUBE	A BSPP	PART No	B	C	D	E	F	G	H	PN BAR	Kg 100
LIGHT SERIES											
22	3/4	MSE22L34BSPP	27.5	44	16	26	36	27	32	160	26.8
28	1	MSE28L1BSPP	30.5	47	18	30	41	36	39		41.5
35	1-1/4	MSE35L114BSPP	34.5	56	20	34	50	50	49		63.3
42	1-1/2	MSE42L112BSPP	40.0	63	22	39	60	50	55		94.1
HEAVY SERIES											
20	3/4	MSE20S34BSPP	26.5	48	16	26	27	20	32	400	32.5
25	1	MSE25S1BSPP	30.0	54	18	20	36	25	39		62.5
30	1-1/4	MSE30S114BSPP	35.5	62	20	34	50	30	49	315	86.0
38	1-1/2	MSE38S112BSPP	41.0	72	22	39	60	50	55		121.2

*316Ti Stainless Steel

*Pressures up to 630 BAR

*Dimensions to EN ISO 8434-1/DIN 2353

*Sizes 20mm to 42mm

DIMENSIONS SUBJECT TO CHANGE, PLEASE CONTACT US IF CRITICAL