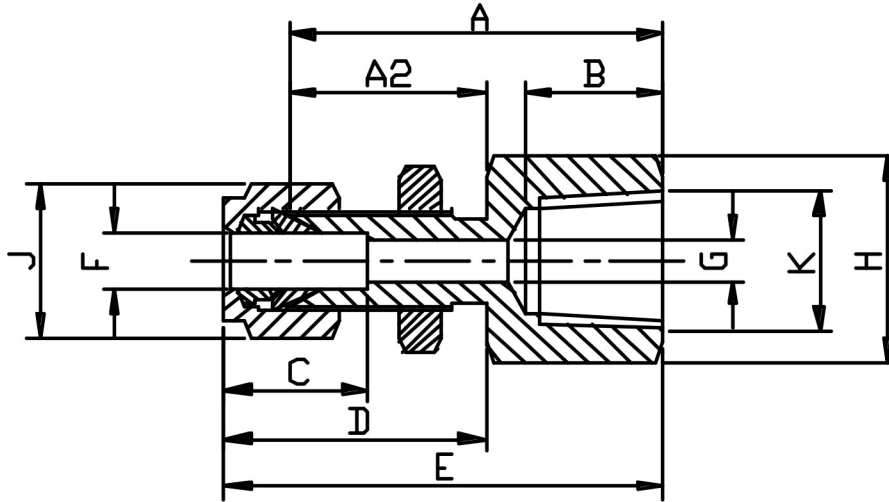


FEMALE BULKHEAD NPT (FRACTIONAL)



| F TUBE | K THREAD | PART No | A | A2 | B | C | D | E | G | H HEX | J HEX | PANEL HOLE DRILL SIZE | PANEL THICK-NESS MAX | Kg 100 |
|--------|----------|-----------------|------|------|------|------|------|------|------|-------|-------|-----------------------|----------------------|--------|
| 1/4 | 1/8 | 4FBH2NPT | 39.7 | 26.2 | 9.9 | 15.1 | 33.7 | 47.2 | 4.8 | 14.3 | 14.3 | 11.5 | 10.3 | 4.0 |
| 1/4 | 1/4 | 4FBH4NPT | 44.5 | 26.3 | 15.1 | 15.1 | 33.7 | 52.0 | 4.8 | 19.1 | 14.3 | 11.5 | 10.3 | 6.4 |
| 3/8 | 1/4 | 6FBH4NPT | 47.6 | 29.4 | 15.1 | 16.7 | 36.9 | 55.2 | 7.1 | 19.1 | 17.5 | 14.7 | 11.1 | 7.5 |
| 1/2 | 1/4 | 8FBH4NPT | 51.6 | 31.2 | 15.1 | 23.0 | 42.1 | 61.9 | 10.3 | 22.2 | 22.2 | 19.5 | 12.7 | 13.6 |
| 1/2 | 1/2 | 8FBH8NPT | 57.2 | 31.2 | 19.8 | 23.0 | 42.1 | 67.5 | 10.3 | 28.6 | 22.2 | 19.5 | 12.7 | 17.2 |

*316 Stainless Steel

*Fractional sizes 1/4" to 1/2"

*Silver plated nuts

DIMENSIONS SUBJECT TO CHANGE, PLEASE CONTACT US IF CRITICAL