

SIZE	PRODUCT CODE			DIMENSIONS		
	BSP	NPT	SW	A	B	KG EACH
1/8	EA02	EA02N	EA02SW	16.5	17.7	0.04
1/4	EA04	EA04N	EA04SW	21	18.6	0.05
3/8	EA06	EA06N	EA06SW	25	20.5	0.07
1/2	EA08	EA08N	EA08SW	29.5	22.5	0.08
3/4	EA12	EA12N	EA12SW	37	25	0.11
1	EA16	EA16N	EA16SW	45	28.2	0.18
1-1/4	EA20	EA20N	EA20SW	54.2	32.2	0.26
1-1/2	EA24	EA24N	EA24SW	59	36.4	0.35
2	EA32	EA32N	EA32SW	75	42	0.51
2-1/2	EA40	EA40N	EA40SW	86.5	47	0.80
3	EA48	EA48N	EA48SW	108.5	52	1.36
4	EA64	EA64N	EA64SW	136	63	2.09

**\*\* DIMENSIONS SUBJECT TO CHANGE - PLEASE CONTACT US IF CRITICAL \*\***

NERO's range of 45 deg Elbows are available threaded BSPP, NPT and Socket weld end connections. They are made from high quality investment castings to ISO4144 or above.

BSP threads are to ISO 228-1 and 7-1

NPT threads are to ANSI B2.1

Made from 316 (CF8M) stainless steel

TABLE 1: PRESSURE-TEMPERATURE RATING

TEMPERATURE (°C)	NO-SHOCK MAXIMUM WORKING PRESSURE (Bar)
-20 to 40	20
100	16.5
150	15
200	14
220	13.5

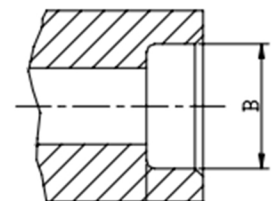
Note 1 Pressure for Intermediate temperatures may be determined by the interpolation method

Note 2 Temperatures indicated are those of the Internal fluid

Note 3 Piping loads, stresses And moments are not taken into account

SIZE	B
1/8	10.7MM
1/4	14MM
3/8	17.5MM
1/2	21.6MM
3/4	27MM
1	33.8MM
1-1/4	42.4MM
1-1/2	48.5MM
2	61.2MM
2-1/2	74.19MM
3	90.17MM
4	115.8MM

Socket weld bore



5 STAR ★★★★★  
CUSTOMER SERVICE



SAME DAY DISPATCH -  
ORDERS PLACED BEFORE 4:30PM



WEALTH OF  
INDUSTRY KNOWLEDGE



ONE OF THE LARGEST  
STOCKISTS IN THE UK