

### FEATURES

- Fast Connection
- High Temperature up to 150°C
- Small, compact design
- Good resistance to chemical corrosive environments
- Food safety
- Allow full flow through Hose / Tubing

### MATERIAL CONSTRUCTION

- Metal Body - SS 316
- Push Button - SS 316
- Claws - SS301
- Seals - FKM

### SPECIFICATIONS

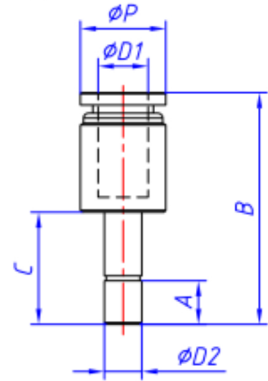
- Operating Pressure - 0-20 BAR
- Operating Temperature - -20 to 150°C
- Vacuum Rating - To 28" Hg
- Application - Air, Vacuum, Steam Beverage, Oil
- Types - Straight

### FITTINGS ADVANTAGE

- Easy to push in and pull out tubes
- Raw material is SS316L and seal is FKM, for high temp and corrosive environments
- 100% tested, no leakage



SSPGJ



CODE	$\phi D1$ (MM)	$\phi D2$ (MM)	B	A	$\phi P$	C	WEIGHT (G)
PI-4MRED6	4	6	32.8	7	9	18	12
PI-4MRED8	4	8	32.8	7	11	18	18.5
PI-6MRED8	6	8	39.2	7	11	21	22
PI-6MRED10	6	10	37.2	7	13.7	18	26
PI-6MRED12	6	12	40.2	7	13.7	21	35
PI-8MRED10	8	10	40.2	7	13.7	21	30
PI-8MRED12	8	12	41.6	7	15.5	21	38
PI-10MRED12	10	12	41.6	7	15.5	21	42

\*\* DIMENSIONS SUBJECT TO CHANGE - PLEASE CONTACT US IF CRITICAL \*\*

We also stock a range of Push-In fittings to work alongside these fittings



### Applications:

- Pneumatics
- Air brake, fuel and lube applications
- Production lines (industrial and automotive)

