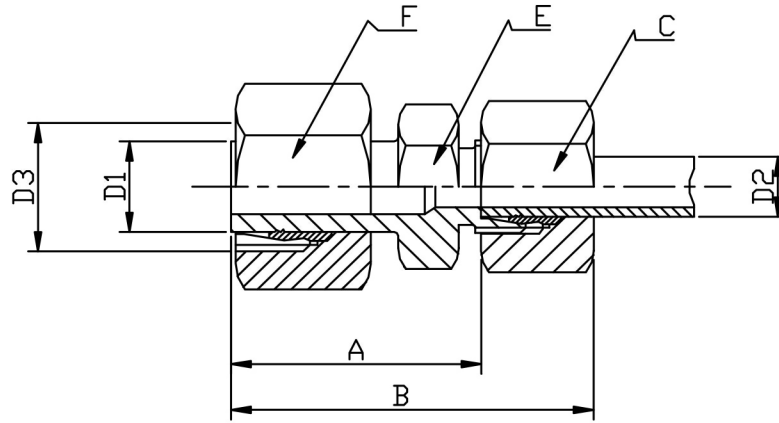


STANDPIPE REDUCING ADAPTOR (LIGHT SERIES)



TUBE D1	TUBE D2	PART No	A	B	C	D3	E	F	PN BAR	Kg 100
8	6	SRA0806L	23.5	38	14	M14 X 1.5	12	17	315	3.8
10	6	SRA1006L	23.5	38	14	M16 X 1.5	14	19		4.5
10	8	SRA1008L	23.5	38	17	M16 X 1.5	14	19		5.1
12	6	SRA1206L	23.5	38	14	M18 X 1.5	14	22		5.7
12	8	SRA1208L	23.5	38	17	M18 X 1.5	14	22		6.1
12	10	SRA1210L	24.5	38	19	M18 X 1.5	17	22		6.6
15	6	SRA1506L	23.5	38	14	M22 X 1.5	17	27		7.9
15	8	SRA1508L	23.5	38	17	M22 X 1.5	17	27		8.4
15	10	SRA1510L	24.5	39	19	M22 X 1.5	17	27		9.0
15	12	SRA1512L	24.5	39	22	M22 X 1.5	19	27		9.7
18	6	SRA1806L	24.5	39	14	M26 X 1.5	19	32		10.8
18	8	SRA1808L	24.5	39	17	M26 X 1.5	19	32		11.7
18	10	SRA1810L	25.5	40	19	M26 X 1.5	19	32		12.2
18	12	SRA1812L	25.5	40	22	M26 X 1.5	19	32		12.9
18	15	SRA1815L	26.5	42	27	M26 X 1.5	24	32		15.0
22	6	SRA2206L	25.5	40	14	M30 X 2	24	36	160	15.2
22	8	SRA2208L	25.0	40	17	M30 X 2	24	36		15.7
22	10	SRA2210L	26.5	41	19	M30 X 2	24	36		15.9
22	12	SRA2212L	26.5	41	22	M30 X 2	24	36		16.7
22	15	SRA2215L	27.5	43	27	M30 X 2	24	36		19.2
22	18	SRA2218L	27.0	43	32	M30 X 2	27	36		21.5
28	6	SRA2806L	26.5	41	14	M36 X 2	30	41		18.5
28	8	SRA2808L	26.5	41	17	M36 X 2	30	41		19.8
28	10	SRA2810L	27.5	42	19	M36 X 2	30	41		20.4
28	12	SRA2812L	27.5	42	22	M36 X 2	30	41		21.1
28	15	SRA2815L	28.5	44	27	M36 X 2	30	41		23.4
28	18	SRA2818L	28.0	44	32	M36 X 2	30	41		25.7
28	22	SRA2822L	30.0	46	36	M36 X 2	32	41		28.8
35	6	SRA3506L	31.5	46	14	M45 X 2	36	50		29.0
35	8	SRA3508L	31.5	46	17	M45 X 2	36	50		30.5
35	10	SRA3510L	32.5	47	19	M45 X 2	36	50	32.5	
35	12	SRA3512L	32.5	47	22	M45 X 2	36	50	34.5	
35	15	SRA3515L	33.5	49	27	M45 X 2	36	50	36.8	
35	18	SRA3518L	33.0	49	32	M45 X 2	36	50	39.2	
35	22	SRA3522L	35.0	51	36	M45 X 2	36	50	41.5	
35	28	SRA3528L	35.0	52	41	M45 X 2	41	50	41.6	
42	10	SRA4210L	33.5	48	19	M52 X 2	46	60	49.0	
42	12	SRA4212L	33.5	48	22	M52 X 2	46	60	50.0	
42	15	SRA4215L	34.5	50	27	M52 X 2	46	60	51.0	
42	18	SRA4218L	34.0	50	32	M52 X 2	46	60	53.1	
42	22	SRA4222L	36.0	52	36	M52 X 2	46	60	53.9	
42	28	SRA4228L	36.0	53	41	M52 X 2	46	60	56.9	
42	35	SRA4235L	35.0	57	50	M52 X 2	46	60	63.0	

*316Ti Stainless Steel

*Pressures up to 630 BAR

*Dimensions to EN ISO 8434-1/DIN 2353

*Sizes 6mm to 42mm

DIMENSIONS SUBJECT TO CHANGE, PLEASE CONTACT US IF CRITICAL