

SIZE	CODE		DIMENSIONS		KG EACH
	BSP	SW	A	B	
1/8	HS02	HS02SW	15	10	0.01
1/4	HS04	HS04SW	18.5	11	0.02
3/8	HS06	HS06SW	21.3	12	0.02
1/2	HS08	HS08SW	26.6	15	0.04
3/4	HS12	HS12SW	31.8	17	0.05
1	HS16	HS16SW	39.5	20	0.10
1-1/4	HS20	HS20SW	48.3	22	0.15
1-1/2	HS24	HS24SW	54.5	22	0.18
2	HS32	HS32SW	66.2	26	0.25
2-1/2	HS40	HS48SW	82	30	0.38
3	HS48	HS48SW	95	33	0.49
4	HS64	HS64SW	121	39	0.83

** DIMENSIONS SUBJECT TO CHANGE - PLEASE CONTACT US IF CRITICAL **

These Half Sockets are available threaded BSPP or with Socket weld end connections.

Suitable for higher pressures than our economical range

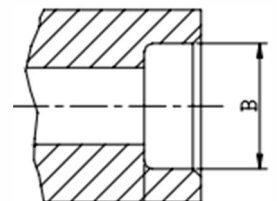
BSP threads are to ISO 228-1

Made from 316 stainless steel pipe

Maximum Working Pressure of 40 BAR

SIZE	B
1/8	10.7MM
1/4	14MM
3/8	17.5MM
1/2	21.6MM
3/4	27MM
1	33.8MM
1-1/4	42.4MM
1-1/2	48.5MM
2	61.2MM
2-1/2	74.19MM
3	90.17MM
4	115.8MM

Socket weld bore



5 STAR ★★★★★
CUSTOMER SERVICE



SAME DAY DISPATCH -
ORDERS PLACED BEFORE 4:30PM



WEALTH OF
INDUSTRY KNOWLEDGE



ONE OF THE LARGEST
STOCKISTS IN THE UK