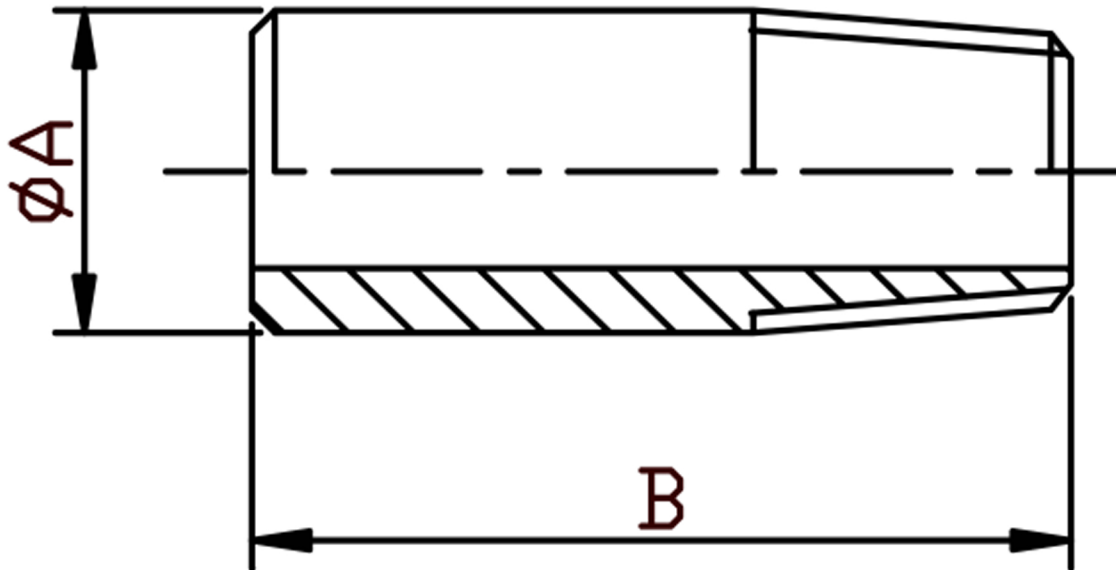


WELD NIPPLE NPT 316L



SIZE	PART No	A	B	Kg/100
1/8	WN02N	10.2	30	1.29
1/4	WN04N	13.5	30	2.05
3/8	WN06N	17.2	30	2.71
1/2	WN08N	21.3	35	4.44
3/4	WN12N	26.9	40	6.49
1	WN16N	33.7	40	9.86
1-1/4	WN20N	42.4	50	15.8
1-1/2	WN24N	48.3	50	18.16
2	WN32N	60.3	50	25.94
2-1/2	WN40N	76.1	60	39.76
3	WN48N	88.9	70	58.51
4	WN64N	114.3	80	97.42

*Pressure rating up to 50 BAR (750 PSI)

*Threads are NPT to ANSI B2.1

*316L stainless steel

*Manufactured from pipe

*Sizes 1/4" to 4"

DIMENSIONS SUBJECT TO CHANGE, PLEASE CONTACT US IF CRITICAL