

FEATURES

- Fast Connection
- High Temperature up to 150°C
- Small, compact design
- Good resistance to chemical corrosive environments
- Food safety
- Allow full flow through Hose / Tubing

MATERIAL CONSTRUCTION

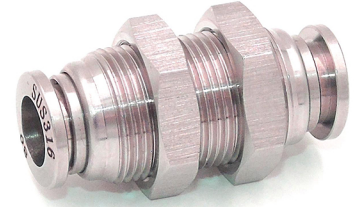
- Metal Body - SS 316
- Push Button - SS 316
- Claws - SS301
- Seals - FKM

SPECIFICATIONS

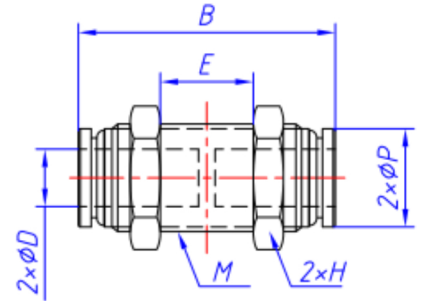
- Operating Pressure - 0-20 BAR
- Operating Temperature - -20 to 150°C
- Vacuum Rating - To 28" Hg
- Application - Air, Vacuum, Steam Beverage, Oil
- Types - Straight

FITTINGS ADVANTAGE

- Easy to push in and pull out tubes
- Raw material is SS316L and seal is FKM, for high temp and corrosive environments
- 100% tested, no leakage



SSPM



CODE	ΦD (MM)	M	B	E	ΦP	H	WEIGHT (G)
PI-4MBHU	4	M11X1	33	8	9	14	6.5
PI-6MBHU	6	M13X1	36	11	11	17	9.3
PI-8MBHU	8	M15X1	36	13	13.7	17	12.5
PI-10MBHU	10	M17X1	39	16	15.5	19	15.5
PI-12MBHU	12	M20X1	40	17	18.7	22	19.5

** DIMENSIONS SUBJECT TO CHANGE - PLEASE CONTACT US IF CRITICAL **

We also stock a range of Push-In fittings to work alongside these fittings



Applications:

- Pneumatics
- Air brake, fuel and lube applications
- Production lines (industrial and automotive)

