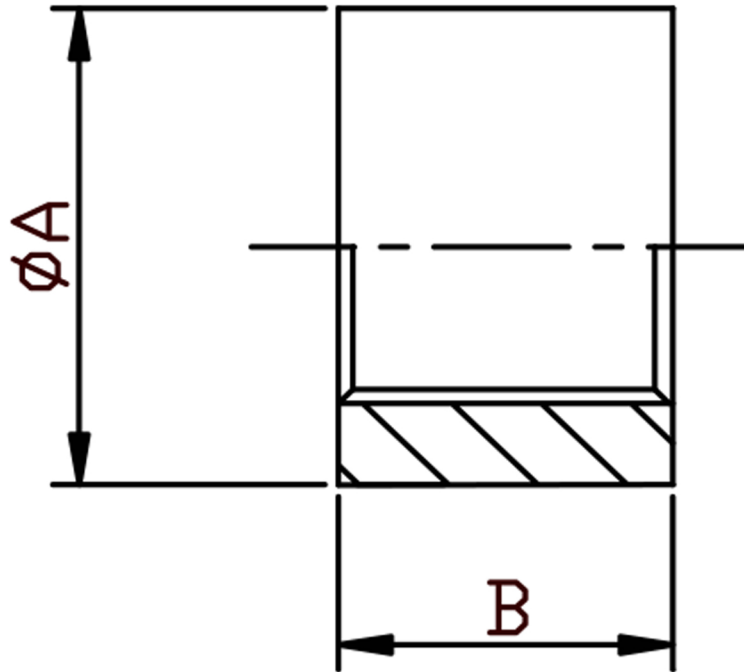


### HALF SOCKET BSPP 316L



SIZE	PART No	A	B	Kg/100
1/8	HS02	15	8	1.36
1/4	HS04	18.5	11	2.02
3/8	HS06	21.3	12	2.34
1/2	HS08	26.6	15	4.36
3/4	HS12	31.8	17	5.4
1	HS16	39.5	20	10.16
1-1/4	HS20	48.3	22	14.79
1-1/2	HS24	54.5	22	17.51
2	HS32	66.2	26	25.09
2-1/2	HS40	82	30	37.66
3	HS48	95	33	49.36
4	HS64	121	39	83.04

\*Pressure rating up to 50 BAR (750 PSI)

\*Female threads are BSPP (Parallel) to ISO 228-1

\*316L stainless steel

\*Manufactured from pipe

\*Sizes 1/8" to 4"

\*\*DIMENSIONS SUBJECT TO CHANGE, PLEASE CONTACT US IF CRITICAL\*\*