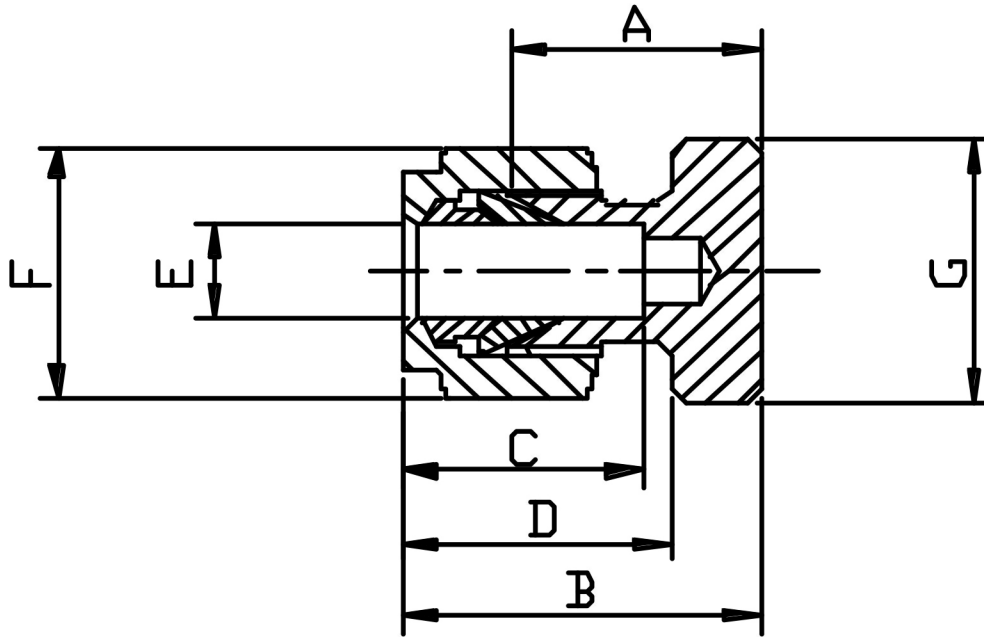


BLANKING CAP (METRIC)



E TUBE	PART No	A	B	C	D	F HEX	G HEX	Kg/100
4	4mCAP	15.1	22.5	14.5	16.9	13	11	1.9
6	6mCAP	15.9	24.1	16.1	18.5	14	13	2.1
8	8mCAP	17.1	25.3	16.9	19.3	16	14	3.0
10	10mCAP	18.3	26.5	17.7	20.1	19	17	3.8
12	12mCAP	19.1	29.9	23.5	22.7	22	22	6.3
16	16mCAP	23.0	33.8	25.1	22.7	25	24	9.0
20	20mCAP	25.4	36.2	25.1	22.7	30	29	12.7
25	25mCAP	28.6	41.3	31.8	27.0	38	38	15.2

*316 Stainless Steel

*Metric sizes 4mm to 25mm

*Silver plated nuts

DIMENSIONS SUBJECT TO CHANGE, PLEASE CONTACT US IF CRITICAL