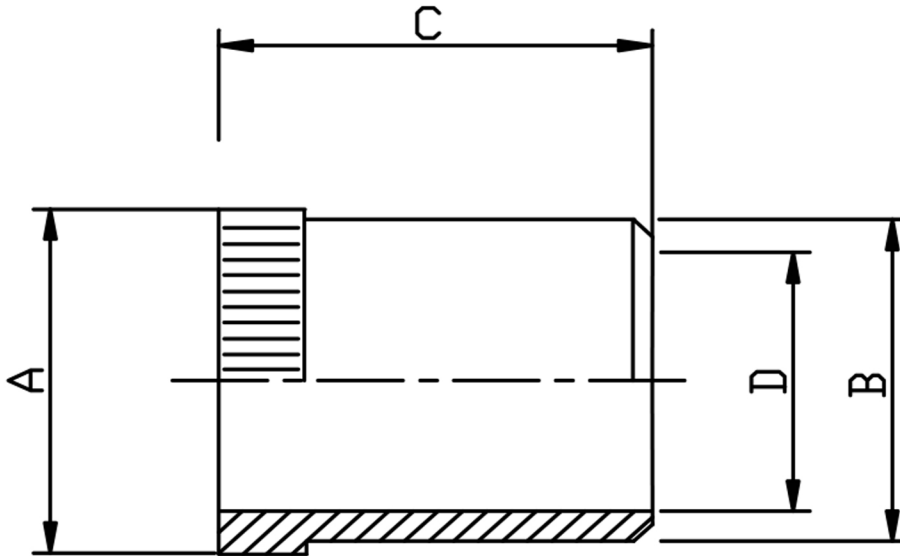


### THIN WALL/NYLON TUBE INSERT



TUBE OD	TUBE ID	PART No	A	B	C	D	Kg 100
4	2.0	NTI0402	3.5	2.0	8.0	1.3	1.0
4	2.5	NTI0425	4.0	2.5	8.0	1.7	1.0
6	3.0	NTI0603	5.0	3.0	14.0	2.2	1.0
6	4.0	NTI0604	5.0	4.0	14.0	3.2	1.0
8	5.5	NTI0855	8.0	5.5	14.0	4.0	1.0
8	6.0	NTI0806	8.0	6.0	15.0	5.0	1.0
10	7.0	NTI1007	9.0	7.0	15.0	6.0	1.0
10	8.0	NTI1008	10.0	8.0	15.0	6.7	1.0
12	9.5	NTI1295	12.0	9.5	15.0	7.7	2.0
12	10.0	NTI1210	12.0	10.0	15.0	8.7	2.0
14	11.0	NTI1411	13.5	11.0	15.0	9.8	2.0
15	12.0	NTI1512	14.8	12.0	15.0	10.7	3.0
16	13.0	NTI1613	14.8	13.0	15.0	11.2	3.0
18	16.0	NTI1816	17.8	16.0	20.0	14.7	4.0
20	16.0	NTI2016	17.8	16.0	20.0	14.7	4.0
22	18.0	NTI2218	21.8	18.0	16.0	16.7	5.0

\*316Ti Stainless Steel

\*Pressures up to 630 BAR

\*Dimensions to EN ISO 8434-1/DIN 2353

\*Sizes 4mm to 22mm

\*\*DIMENSIONS SUBJECT TO CHANGE, PLEASE CONTACT US IF CRITICAL\*\*