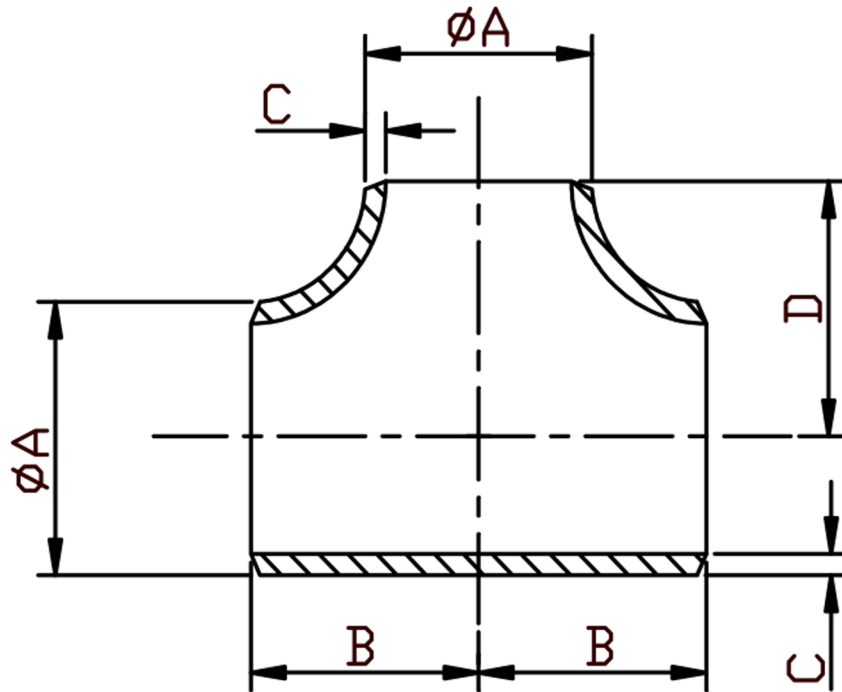


EQUAL TEE SCH40 304/L



SIZE N.B	PART NUMBER	A	B/D	C	Kg/100
1/2	BT08/4-304	21.3	25.4	2.77	18.1
3/4	BT12/4-304	26.6	28.7	2.87	25.8
1	BT16/4-304	33.4	38.1	3.38	25.6
1 1/4	BT20/4-304	42.1	47.75	3.56	46.3
1 1/2	BT24/4-304	48.1	57.15	3.68	64.8
2	BT32/4-304	60.3	63.50	3.91	89.3
2 1/2	BT40/4-304	73.0	76.20	5.16	198
3	BT48/4-304	88.9	85.85	5.49	261
4	BT64/4-304	114.3	104.9	6.02	476
5	BT80/4-304	141.3	124	6.55	784
6	BT96/4-304	168.3	143	7.11	954

*Conforming to ASTM A403, ANSI B16.9, ANSI B16.28
 *304/L Stainless steel Welded
 *Schedule 40S Wall thickness
 *Sizes 1/2" to 6" Nominal Bore

DIMENSIONS SUBJECT TO CHANGE, PLEASE CONTACT US IF CRITICAL