

SIZE	CODE			DIMENSIONS		
	BSP	NPT	SW	A	B	KG EACH
1/8	RC02	RC02N	RC02SW	16.5	11.5	0.01
1/4	RC04	RC04N	RC04SW	19.8	13.4	0.02
3/8	RC06	RC06N	RC06SW	21.4	16.9	0.02
1/2	RC08	RC08N	RC08SW	25.6	18.6	0.03
3/4	RC12	RC12N	RC12SW	31.8	20	0.05
1	RC16	RC16N	RC16SW	39	23	0.09
1-1/4	RC20	RC20N	RC20SW	48.4	26.2	0.14
1-1/2	RC24	RC24N	RC24SW	54.4	26.2	0.16
2	RC32	RC32N	RC32SW	67	31	0.26
2-1/2	RC40	RC40N	RC40SW	84	31.7	0.41
3	RC48	RC48N	RC48SW	98	35.1	0.66
4	RC64	RC64N	RC64SW	124	41.6	1.19

** DIMENSIONS SUBJECT TO CHANGE - PLEASE CONTACT US IF CRITICAL **

NERO's range of Round Caps are available threaded BSPP, NPT and Socket Weld end connections. They are made from high quality investment castings to ISO4144 or above.

BSP threads are to ISO 228-1 and 7-1

NPT threads are to ANSI B2.1

Made from 316 (CF8M) stainless steel

TABLE 1: PRESSURE-TEMPERATURE RATING

TEMPERATURE (°C)	NO-SHOCK MAXIMUM WORKING PRESSURE (Bar)
-20 to 40	20
100	16.5
150	15
200	14
220	13.5

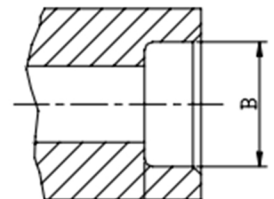
Note 1 Pressure for Intermediate temperatures may be determined by the interpolation method

Note 2 Temperatures indicated are those of the Internal fluid

Note 3 Piping loads, stresses And moments are not taken into account

SIZE	B
1/8	10.7MM
1/4	14MM
3/8	17.5MM
1/2	21.6MM
3/4	27MM
1	33.8MM
1-1/4	42.4MM
1-1/2	48.5MM
2	61.2MM
2-1/2	74.19MM
3	90.17MM
4	115.8MM

Socket weld bore



SAME DAY DISPATCH -
ORDERS PLACED BEFORE 4:30PM



WEALTH OF
INDUSTRY KNOWLEDGE



ONE OF THE LARGEST
STOCKISTS IN THE UK