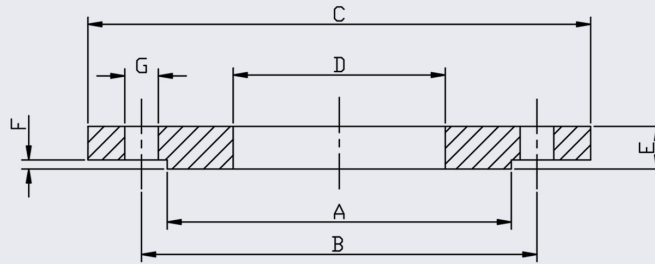
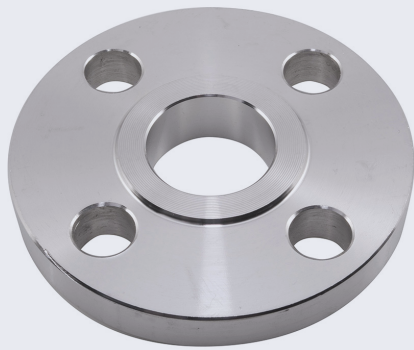


# PN10 Slip-On Flange (316/L and 304/L)



This flange conforms to EN 1092-1 and is available in 316/L and 304/L.

Full material traceability is available and 3.1B certification can be provided upon request.

Bolt kit sizes shown in the above table are for bolting two flanges together including the thickness of a gasket. If using a wafer pattern valve, longer bolts will be required.

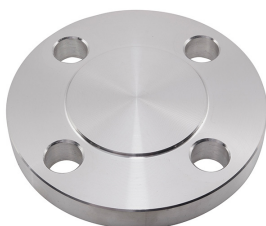
| PIPE SIZE | DN  | CODE 316       | CODE 304           | A   | B   | C   | D     | E  | F | G  | BOLT   | KG EACH | BOLT KIT CODE |
|-----------|-----|----------------|--------------------|-----|-----|-----|-------|----|---|----|--------|---------|---------------|
| 1/2       | 15  | F1630.5        | F1630.5-304        | 45  | 65  | 95  | 22    | 16 | 2 | 14 | 4XM12  | 0.68    | BK03          |
| 3/4       | 20  | F1630.75       | F1630.75-304       | 58  | 75  | 105 | 27.5  | 18 | 2 | 14 | 4XM12  | 0.94    | BK03          |
| 1         | 25  | F1631.0        | F1631.0-304        | 68  | 85  | 115 | 34.5  | 18 | 2 | 14 | 4XM12  | 1.11    | BK03          |
| 1.25      | 32  | F1631.25       | F1631.25-304       | 78  | 100 | 140 | 43.5  | 18 | 2 | 18 | 4XM16  | 1.62    | BK04          |
| 1.5       | 40  | F1631.5        | F1631.5-304        | 88  | 110 | 150 | 49.5  | 18 | 3 | 18 | 4XM16  | 1.86    | BK04          |
| 2         | 50  | F1632.0        | F1632.0-304        | 102 | 125 | 165 | 61.5  | 20 | 3 | 18 | 4XM16  | 2.47    | BK04          |
| 2.5       | 65  | F1632.5        | F1632.5-304        | 122 | 145 | 185 | 74.7  | 20 | 3 | 18 | 4XM16  | 3.00    | BK04          |
| 2.5       | 65  | F1632.5/8 HOLE | F1632.5-304/8 HOLE | 122 | 145 | 185 | 74.7  | 20 | 3 | 18 | 8XM16  | 3.00    | BK05          |
| 3         | 80  | F1633.0        | F1633.0-304        | 138 | 160 | 200 | 90.5  | 20 | 3 | 18 | 8XM16  | 3.79    | BK07          |
| 4         | 100 | F1634.0        | F1634.0-304        | 158 | 180 | 220 | 116   | 22 | 3 | 18 | 8XM16  | 4.03    | BK07          |
| 5         | 125 | F1635.0        | F1635.0-304        | 188 | 210 | 250 | 143.8 | 22 | 3 | 18 | 8XM16  | 5.46    | BK07          |
| 6         | 150 | F1636.0        | F1636.0-304        | 212 | 240 | 285 | 170.5 | 22 | 3 | 22 | 8XM20  | 6.57    | BK10          |
| 8         | 200 | F1038.0        | F1038.0-304        | 268 | 295 | 340 | 221.5 | 24 | 3 | 22 | 8XM20  | 9.28    | BK08          |
| 10        | 250 | F10310.0       | F10310.0-304       | 320 | 350 | 395 | 276.5 | 26 | 3 | 22 | 12XM20 | 11.85   | BK09          |
| 12        | 300 | F10312.0       | F10312.0-304       | 370 | 400 | 445 | 327.5 | 26 | 4 | 22 | 12XM20 | 13.61   | BK09          |
| 14        | 350 | F10314.0       | F10314.0-304       | 430 | 460 | 505 | 359.5 | 30 | 4 | 22 | 16XM20 | 20.51   | BK18          |
| 16        | 400 | F10316.0       | F10316.0-304       | 482 | 515 | 565 | 411   | 32 | 4 | 26 | 16XM24 | 25.91   | BK21          |

\* For 6" and below, PN10 are the same dimensions as PN16 as shown in the table above \*

\*\* Dimensions subject to change - Please contact us if critical \*\*

## Other products you might like...

We also keep Blind Flanges to this standard



We also keep Gaskets to suit all our flanges in both EPDM and Non-Asbestos materials

