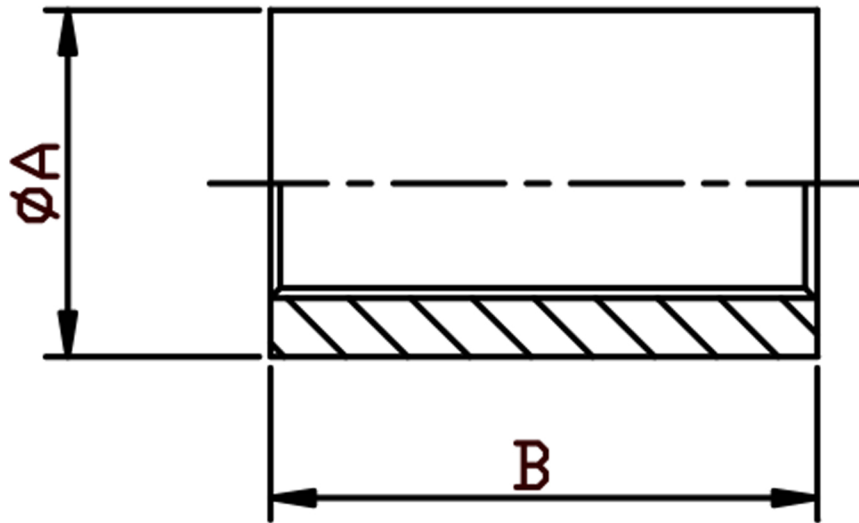


FULL SOCKET BSPP 316L



SIZE	PART No	A	B	Kg/100
1/8	S02	15	20	2.33
1/4	S04	18.5	25	3.9
3/8	S06	21.3	26	4.39
1/2	S08	26.6	34	8.71
3/4	S12	31.8	36	10.8
1	S16	39.5	43	19.51
1-1/4	S20	48.3	48	29.03
1-1/2	S24	54.5	48	34.36
2	S32	66.2	56	49.37
2-1/4	S36	76.2	38	39.4
2-1/2	S40	82	65	74.26
3	S48	95	71	97.46
4	S64	121	83	124.2
5	S80	151	96	300
6	S96	177	96	360

*Pressure rating up to 50 BAR (750 PSI)

*Female threads are BSPP (Parallel) to ISO 228-1

*316L stainless steel

*Manufactured from pipe

*Sizes 1/8" to 6"

DIMENSIONS SUBJECT TO CHANGE, PLEASE CONTACT US IF CRITICAL