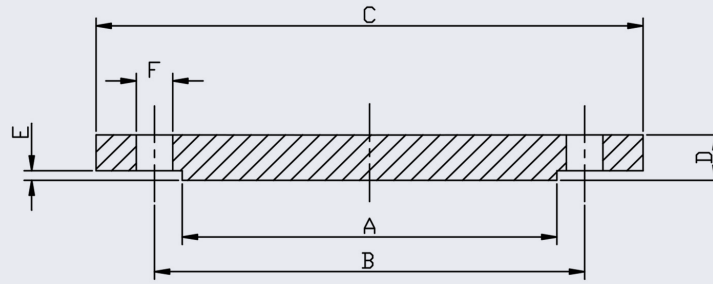
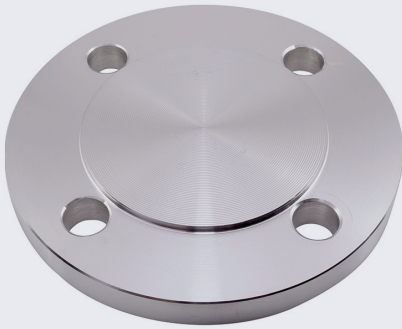


# PN10 Blind Flange (316/L and 304/L)



This flange conforms to EN 1092-1 and is available in 316/L and 304/L.

Full material traceability is available and 3.1B certification can be provided upon request.

Bolt kit sizes shown in the above table are for bolting two flanges together including the thickness of a gasket. If using a wafer pattern valve, longer bolts will be required.

PIPE SIZE	DN	CODE 316	CODE 304	A	B	C	D	E	F	BOLT	KG EACH	BOLT KIT CODE
1/2	15	F1680.5	F1680.5-304	45	65	95	16	2	14	4XM12	0.72	BK03
3/4	20	F1680.75	F1680.75-304	58	75	105	18	2	14	4XM12	1.01	BK03
1	25	F1681.0	F1681.0-304	68	85	115	18	2	14	4XM12	1.23	BK03
1.25	32	F1681.25	F1681.25-304	78	100	150	18	2	18	4XM16	1.80	BK04
1.5	40	F1681.5	F1681.5-304	88	110	150	18	3	18	4XM16	2.09	BK04
2	50	F1682.0	F1682.0-304	102	125	165	18	3	18	4XM16	2.88	BK04
2.5	65	F1682.5	F1682.5-304	122	145	185	18	3	18	4XM16	3.66	BK04
2.5	65	F1682.5/8 HOLE	F1682.5-304/8 HOLE	122	145	185	18	3	18	8XM16	3.66	BK05
3	80	F1683.0	F1683.0-304	138	160	200	20	3	18	8XM16	4.77	BK07
4	100	F1684.0	F1684.0-304	158	180	220	20	3	18	8XM16	5.65	BK07
5	125	F1685.0	F1685.0-304	188	210	250	22	3	18	8XM16	8.42	BK07
6	150	F1686.0	F1686.0-304	212	240	285	22	3	22	8XM20	10.40	BK10
8	200	F1088.0	F1088.0-304	268	295	340	24	3	22	8XM20	16.00	BK08
10	250	F10810.0	F10810.0-304	320	350	395	26	3	22	12XM20	23.50	BK09
12	300	F10812.0	F10812.0-304	370	400	445	26	4	2	12XM20	30.00	BK09
14	350	F10814.0	F10814.0-304	430	460	505	26	4	22	16XM20	38.5	BK18
16	400	F10816.0	F10816.0-304	482	515	565	26	4	26	16XM24	48.1	BK21

\* For 6" and below, PN10 are the same dimensions as PN16 as shown in the table above \*

\*\* Dimensions subject to change - Please contact us if critical \*\*

## Other products you might like...

We also keep Slip-on Flanges to this standard



We also keep Gaskets to suit all our flanges in both EPDM and Non-Asbestos materials

