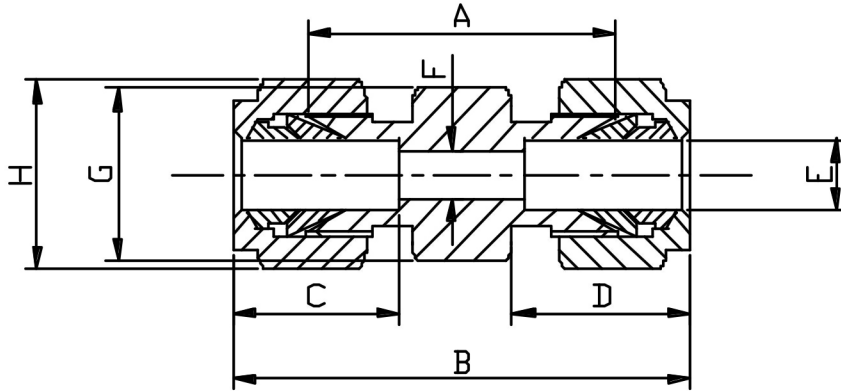


### EQUAL UNION (METRIC)



E TUBE	PART No	A	B	C	D	F	G HEX	H HEX	Kg/100
4	4mU	25.4	40.2	14.5	16.9	2.8	13	13	1.9
6	6mU	26.2	41.0	16.1	18.5	2.7	13	14	3.4
8	8mU	28.2	44.6	16.9	19.3	6.4	14	16	4.9
10	10mU	30.2	46.6	17.7	20.1	7.9	18	19	6.6
12	12mU	30.9	52.9	23.5	22.7	9.5	22	22	10.2
15	15mU	31.8	52	25.1	22.7	12.7	24	25	12.1
16	16mU	31.8	53.4	25.1	22.7	12.7	24	25	13.0
20	20mU	34.1	55.7	25.1	22.7	16.7	29	30	16.9
22	22mU	34.8	55	25.1	22.7	16.7	29	32	17.1
25	25mU	40.5	65.9	31.8	27.0	22.0	55	38	17.3

\*316 Stainless Steel

\*Metric sizes 4mm to 25mm

\*Silver plated nuts

\*\*DIMENSIONS SUBJECT TO CHANGE, PLEASE CONTACT US IF CRITICAL\*\*