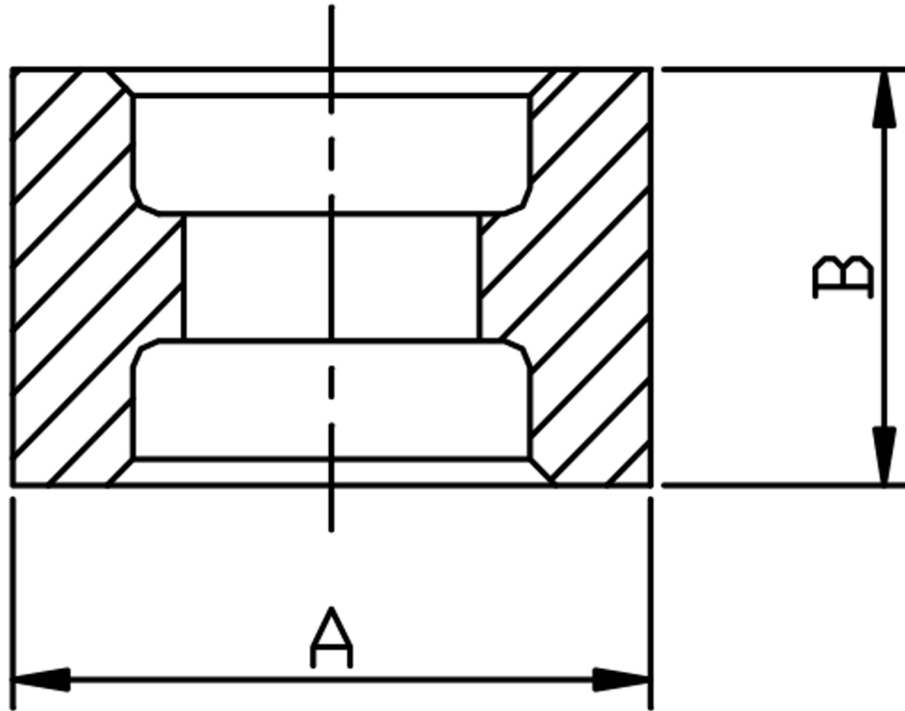


FULL COUPLING SOCKET WELD 316L



| SIZE | PART No | A | B | Kg/100 |
|-------|---------------|----|----|--------|
| 1/8 | 3S02SW | 19 | 25 | 4.0 |
| 1/4 | 3S04SW | 22 | 25 | 5.0 |
| 3/8 | 3S06SW | 25 | 25 | 5.3 |
| 1/2 | 3S08SW | 31 | 29 | 10.2 |
| 3/4 | 3S12SW | 36 | 35 | 12.5 |
| 1 | 3S16SW | 45 | 38 | 22.7 |
| 1-1/4 | 3S20SW | 55 | 38 | 36.8 |
| 1-1/2 | 3S24SW | 60 | 38 | 44.4 |
| 2 | 3S32SW | 75 | 51 | 68.8 |

*Socket weld ends (SW)

*Dimensions to ANSI B16.11/BS3799

*3000 LB rating

*Sizes 1/8" to 2"

*316L stainless steel

*Larger sizes are available

DIMENSIONS SUBJECT TO CHANGE, PLEASE CONTACT US IF CRITICAL