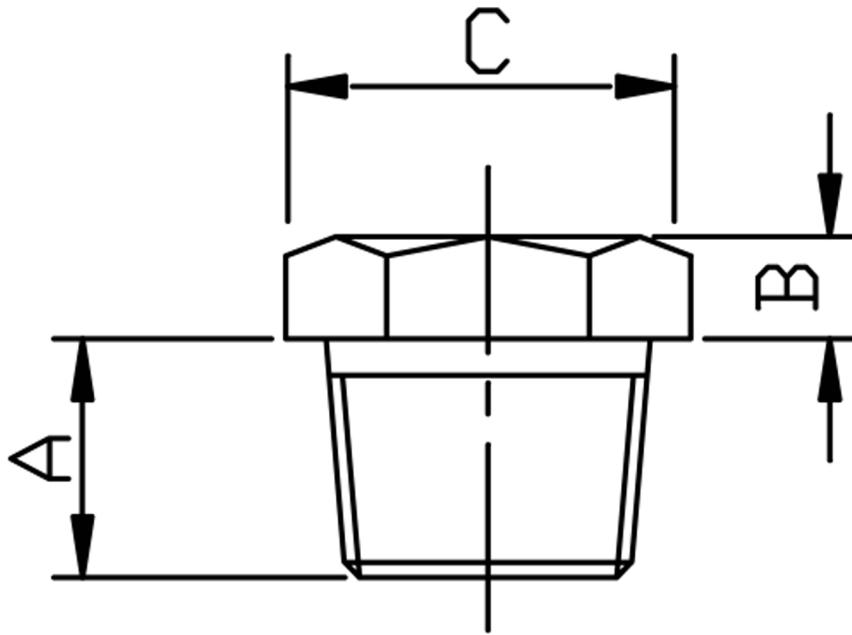


6K HEXAGON HEAD PLUG NPT 316L



SIZE	PART No	A	B	C	Kg/100
1/8	3HP02N	9	6	11	1.3
1/4	3HP04N	13	6	16	2.9
3/8	3HP06N	13	8	18	4.4
1/2	3HP08N	16	8	22	6.8
3/4	3HP12N	18	10	28	12.6
1	3HP16N	21	10	35	22.1
1-1/4	3HP20N	22	14	47	45.4
1-1/2	3HP24N	22	16	52	58.7
2	3HP32N	24	17	64	101.2

*NPT threaded to ANSI B2.1

*Dimensions to ANSI B16.11/BS3799

*6000 LB rating

*Sizes 1/8" to 2"

*316L stainless steel

*Larger sizes are available

****DIMENSIONS SUBJECT TO CHANGE, PLEASE CONTACT US IF CRITICAL****