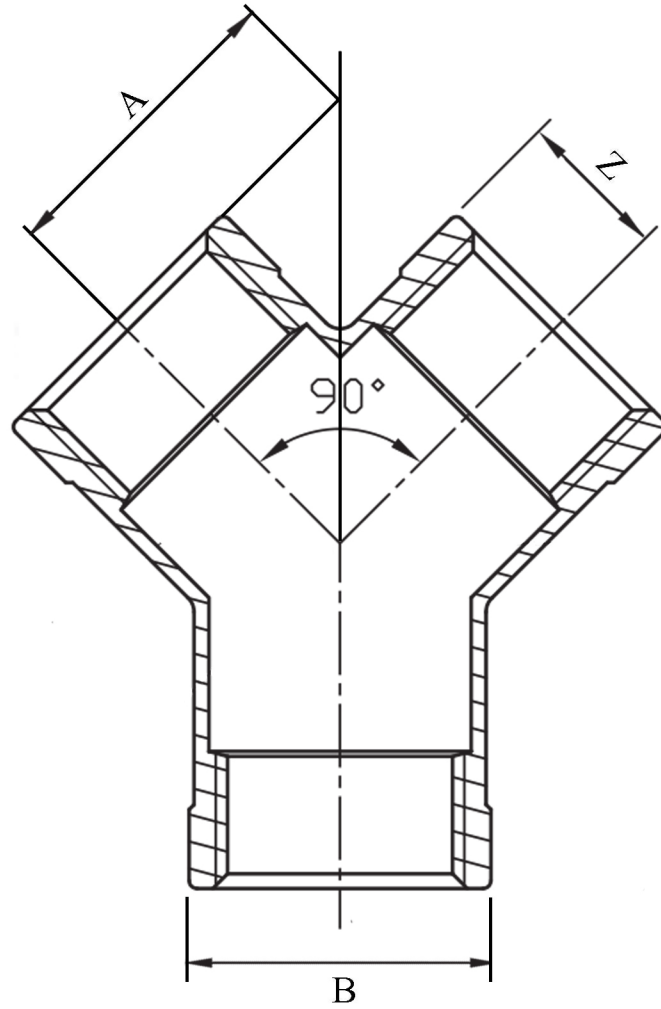


Y-PIECE BSPP 316L



SIZE	PART No	A	B	Z	Kg/100
1/8	Y02	14	17	8.5	10.2
1/4	Y04	17.4	20	10	10.7
3/8	Y06	21.5	23	11.5	11.3
1/2	Y08	26.5	27	13.5	11.9
3/4	Y12	33	32	16	16.5
1	Y16	40.5	38	19	30.4
1 1/4	Y20	50	45	22.5	42.5
1 1/2	Y24	57	48	24	57
2	Y32	70.5	57	28.5	104.5

*Pressure rating up to 20 BAR (300 PSI)

*Female threads are BSPP (Parallel) to ISO 228-1

*316 CF8M stainless steel

*Investment castings

*Sizes 1/8" to 2"

****DIMENSIONS SUBJECT TO CHANGE, PLEASE CONTACT US IF CRITICAL****