

FEATURES

- Fast Connection
- High Temperature up to 150°C
- Small, compact design
- Good resistance to chemical corrosive environments
- Food safety
- Allow full flow through Hose / Tubing

MATERIAL CONSTRUCTION

- Metal Body - SS 316
- Push Button - SS 316
- Claws - SS301
- Seals - FKM

SPECIFICATIONS

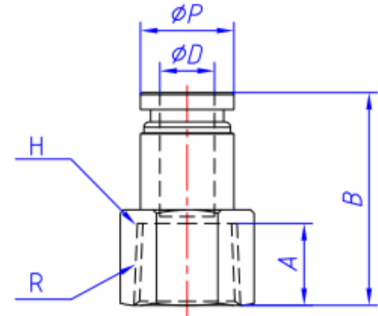
- Operating Pressure - 0-20 BAR
- Operating Temperature - -20 to 150°C
- Vacuum Rating - To 28" Hg
- Application - Air, Vacuum, Steam Beverage, Oil
- Types - Straight

FITTINGS ADVANTAGE

- Easy to push in and pull out tubes
- Raw material is SS316L and seal is FKM, for high temp and corrosive environments
- 100% tested, no leakage



SSPCF



CODE	ϕD (MM)	G (BSPP)	A	B	ϕP	H	WEIGHT (G)
PI-4MFC2BSPP	4	G1/8	7	24	9	12	14.5
PI-6MFC2BSPP	6	G1/8	7	25.5	11	14	17
PI-6MFC4BSPP		G1/4	8	26.5		17	23
PI-8MFC4BSPP	8	G1/4	8	26.8	13.7	17	24.5
PI-8MFC6BSPP		G3/8	8	26.8		19	28
PI-10MFC4BSPP	10	G1/4	8	28	15.5	19	26
PI-12MFC4BSPP	12	G1/4	8	28.4	18.7	19	38
PI-12MFC6BSPP		G3/8	8	28.4		19	40

** DIMENSIONS SUBJECT TO CHANGE - PLEASE CONTACT US IF CRITICAL **

We also stock a range of Push-In fittings to work alongside these fittings



Applications:

- Pneumatics
- Air brake, fuel and lube applications
- Production lines (industrial and automotive)

