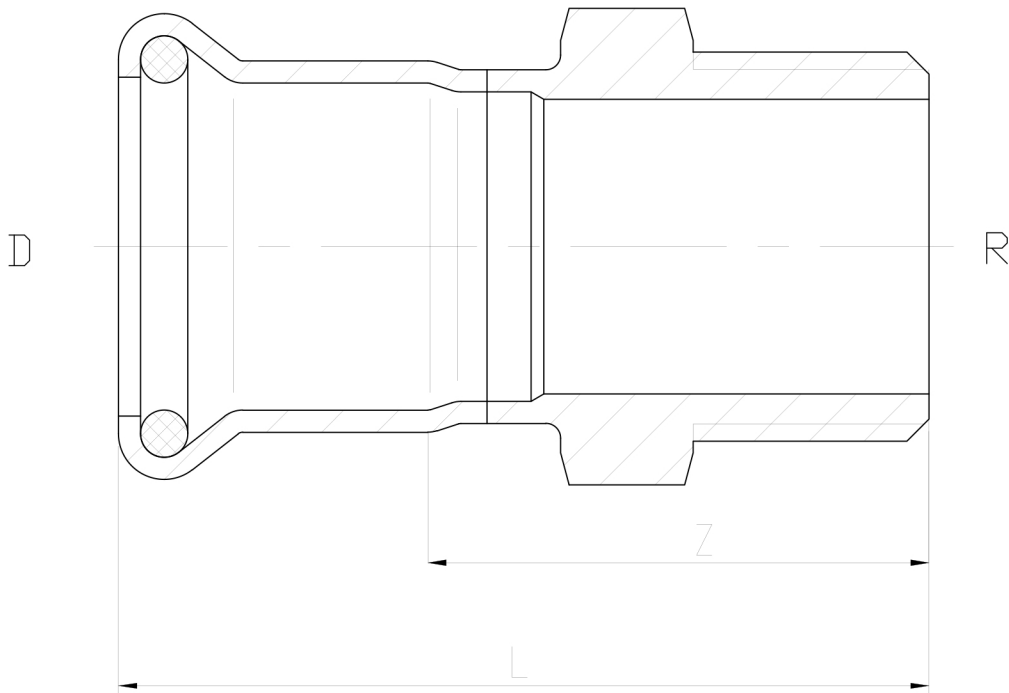


### MALE COUPLING



SIZE	PART No	D	R	L	Z	WEIGHT
						KG EACH
15x1/2"	PFMC15X1/2BSPT	15	1/2	55	35	0.042
15x3/4"	PFMC15X3/4BSPT	15	3/4	57	37	0.075
18x1/2"	PFMC18X1/2BSPT	18	1/2	55	35	0.053
18x3/4"	PFMC18X3/4BSPT	18	3/4	59	39	0.081
22x1/2"	PFMC22X1/2BSPT	22	1/2	56	35	0.065
22x3/4"	PFMC22X3/4BSPT	22	3/4	60	39	0.093
22x1"	PFMC22X1BSPT	22	1	63	42	0.115
28x3/4"	PFMC28X3/4BSPT	28	3/4	66	43	0.107
28x1"	PFMC28X1BSPT	28	1	68	45	0.129
28x1 1/4"	PFMC28X1 1/4BSPT	28	1 1/4	70	47	0.169
35x1"	PFMC35X1BSPT	35	1	69	43	0.159
35x1 1/4"	PFMC35X1 1/4BSPT	35	1 1/4	70	44	0.165
35x1 1/2"	PFMC35X1 1/2BSPT	35	1 1/2	70	44	0.204
42x1 1/4"	PFMC42X1 1/4BSPT	42	1 1/4	76	46	0.192
42x1 1/2"	PFMC42X1 1/2BSPT	42	1 1/2	76	46	0.222
54x1 1/2"	PFMC54X1 1/2BSPT	54	1 1/2	84	49	0.298
54x2"	PFMC54X2BSPT	54	2	90	55	0.358
76.1x2 1/2"	PFFC76.1X2 1/2BSPT	76.1	2 1/2	115	62	0.683
88.9x3"	PFMC88.9X3BSPT	88.9	3	130	70	0.874
108x4"	PFMC108X4BSPT	108	4	157	82	1.411

\*316L/1.4404 SS

\*-35°C to +135°C (EPDM Seal)

\*-20°C to +200°C (Optional FPM Seal)

\*Maximum 16 BAR Operating pressure

\*WRAS/DVGW Approved

\*Sizes 15MM to 108MM

\*Female threads Parallel Rp to EN10226-1/ISO7-1

\*Male threads Taper Rc to EN10226-1/ISO7-1

\*\*DIMENSIONS SUBJECT TO CHANGE, PLEASE CONTACT US IF CRITICAL\*\*