

SIZE	CODE			DIMENSIONS		
	BSP	NPT	SW	A	B	KG EACH
1/8	UC02	UC02N	UC02SW	29.1	25	0.08
1/4	UC04	UC04N	UC04SW	29.1	33.9	0.10
3/8	UC06	UC06N	UC06SW	34	36	0.13
1/2	UC08	UC08N	UC08SW	37.5	39	0.15
3/4	UC12	UC12N	UC12SW	44.5	41	0.20
1	UC16	UC16N	UC16SW	53.5	50	0.37
1-1/4	UC20	UC20N	UC20SW	64	51	0.48
1-1/2	UC24	UC24N	UC24SW	71.5	57	0.66
2	UC32	UC32N	UC32SW	85.5	62	0.95
2-1/2	UC40	UC40N	UC40SW	108.5	68.5	2.02
3	UC48	UC48N	UC48SW	123.5	78	2.58
4	UC64	UC64N	UC64SW	153.5	91.5	4.20

**** DIMENSIONS SUBJECT TO CHANGE - PLEASE CONTACT US IF CRITICAL ****

NERO's range of Conical Unions are available threaded BSPP, NPT, or with Socket weld end connections. They are made from high quality investment castings to ISO4144 or above.

BSP threads are to ISO 228-1 and 7-1

NPT threads are to ANSI B2.1

Made from 316 (CF8M) stainless steel

TABLE 1: PRESSURE-TEMPERATURE RATING

TEMPERATURE (°C)	NO-SHOCK MAXIMUM WORKING PRESSURE (Bar)
-20 to 40	20
100	16.5
150	15
200	14
220	13.5

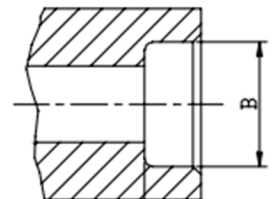
Note 1 Pressure for Intermediate temperatures may be determined by the interpolation method

Note 2 Temperatures indicated are those of the Internal fluid

Note 3 Piping loads, stresses And moments are not taken into account

SIZE	B
1/8	10.7MM
1/4	14MM
3/8	17.5MM
1/2	21.6MM
3/4	27MM
1	33.8MM
1-1/4	42.4MM
1-1/2	48.5MM
2	61.2MM
2-1/2	74.19MM
3	90.17MM
4	115.8MM

Socket weld bore



SAME DAY DISPATCH - ORDERS PLACED BEFORE 4:30PM



WEALTH OF INDUSTRY KNOWLEDGE



ONE OF THE LARGEST STOCKISTS IN THE UK