

SIZE	CODE			DIMENSIONS		
	BSP	NPT	SW	A	B	KG EACH
1/4 x 1/8	RS0402	RS0402N	RS0402SW	18.5	24.9	0.03
3/8 x 1/8	RS0602	-	RS0602SW	22	24.9	0.04
3/8 x 1/4	RS0604	RS0604N	RS0604SW	22	29	0.04
1/2 x 1/8	RS0802	-	RS0802SW	26.5	27.5	0.05
1/2 x 1/4	RS0804	RS0804N	RS0804SW	26.5	29.4	0.05
1/2 x 3/8	RS0806	RS0806N	RS0806SW	26.5	31.6	0.06
3/4 x 1/4	RS1204	-	-	32.5	30.4	0.07
3/4 x 3/8	RS1206	RS1206N	RS1206SW	32.5	32.6	0.08
3/4 x 1/2	RS1208	RS1208N	RS1208SW	32.5	32.5	0.09
1 x 1/4	RS1604	-	-	40	34.4	0.16
1 x 3/8	RS1606	-	-	40	40	0.12
1 x 1/2	RS1608	RS1608N	RS1608SW	40	40	0.13
1 x 3/4	RS1612	RS1612N	RS1612SW	40	38	0.15
1-1/4 x 1/2	RS2008	-	-	49	40	0.18
1-1/4 x 3/4	RS2012	RS2012N	RS2012SW	49	41	0.19
1-1/4 x 1	RS2016	RS2016N	RS2016SW	49	45	0.21
1-1/2 x 1/2	RS2408	-	RS2408SW	55	41	0.22
1-1/2 x 3/4	RS2412	-	RS2412SW	55	42	0.22
1-1/2 x 1	RS2416	RS2416N	RS2416SW	55	46	0.24
1-1/2 x 1-1/4	RS2420	RS2420N	RS2420SW	55	49	0.24
2 x 1/2	RS3208	-	RS3208SW	68	45	0.33
2 x 3/4	RS3212	-	RS3212SW	68	46	0.34
2 x 1	RS3216	RS3216N	RS3216SW	68	50	0.37
2 x 1-1/4	RS3220	RS3220N	RS3220SW	68	53	0.40
2 x 1-1/2	RS3224	RS3224N	RS3224SW	68	54	0.41
2-1/2 x 1-1/2	RS4024	-	RS4024SW	84	57	0.58
2-1/2 x 2	RS4032	RS4032N	RS4032SW	84	61	0.60
3 x 1-1/2	RS4824	-	RS4824SW	97.5	60	0.79
3 x 2	RS4832	RS4832N	RS4832SW	97.5	64	0.82
3 x 2-1/2	RS4840	RS4840N	RS4840SW	97.5	67	0.92
4 x 2	RS6432	RS6432N	RS6432SW	124	70	1.32
4 x 2-1/2	RS6440	-	RS6440SW	124	73	1.84
4 x 3	RS6448	RS6448N	RS6448SW	124	76	1.46

** DIMENSIONS SUBJECT TO CHANGE - PLEASE CONTACT US IF CRITICAL **

NERO's range of Reducing Sockets are available threaded BSPP, NPT and Socket Weld end connections.

They are made from high quality investment castings to ISO4144 or above.

BSP threads are to ISO 228-1 and 7-1

NPT threads are to ANSI B2.1

Made from 316 (CF8M) stainless steel

TABLE 1: PRESSURE-TEMPERATURE RATING

TEMPERATURE (°C)	NO-SHOCK MAXIMUM WORKING PRESSURE (Bar)
-20 to 40	20
100	16.5
150	15
200	14
220	13.5

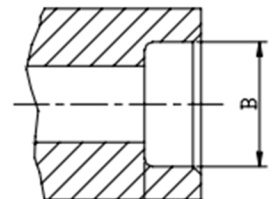
Note 1 Pressure for Intermediate temperatures may be determined by the interpolation method

Note 2 Temperatures indicated are those of the Internal fluid

Note 3 Piping loads, stresses And moments are not taken into account

SIZE	B
1/8	10.7MM
1/4	14MM
3/8	17.5MM
1/2	21.6MM
3/4	27MM
1	33.8MM
1-1/4	42.4MM
1-1/2	48.5MM
2	61.2MM
2-1/2	74.19MM
3	90.17MM
4	115.8MM

Socket weld bore



SAME DAY DISPATCH - ORDERS PLACED BEFORE 4:30PM



WEALTH OF INDUSTRY KNOWLEDGE



ONE OF THE LARGEST STOCKISTS IN THE UK