

SIZE	CODE			DIMENSIONS		
	BSP	NPT	SW	A	B	KG EACH
1/8	S02	S02N	S02SW	15	20	0.023
1/4	S04	S04N	S04SW	18.5	25	0.039
3/8	S06	S06N	S06SW	21.3	26	0.044
1/2	S08	S08N	S08SW	26.6	34	0.087
3/4	S12	S12N	S12SW	31.8	36	0.108
1	S16	S16N	S16SW	39.5	43	0.195
1-1/4	S20	S20N	S20SW	48.3	48	0.29
1-1/2	S24	S24N	S24SW	54.5	48	0.344
2	S32	S32N	S32SW	66.2	56	0.494
2-1/4	S36	-	-	76.2	38	0.394
2-1/2	S40	S40N	S40SW	82	65	0.743
3	S48	S48N	S48SW	95	71	0.975
4	S64	S64N	S64SW	121	83	1.24
5	S80	-	-	151	96	3.00
6	S96	-	-	177	96	3.6

NERO's range of 150lb fittings are available threaded BSP and NPT, or with Socket weld end connections. They are made from high quality investment castings to ISO4144 or above.

BSP threads are to ISO 228-1 and 7-1

NPT threads are to ANSI B2.1

Made from 316 (CF8M) stainless steel

TABLE 1: PRESSURE-TEMPERATURE RATING

TEMPERATURE (°C)	NO-SHOCK MAXIMUM WORKING PRESSURE (Bar)
-20 to 40	50
100	50
150	35
200	25
220	20

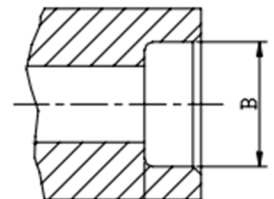
Note 1 Pressure for Intermediate temperatures may be determined by the interpolation method

Note 2 Temperatures indicated are those of the Internal fluid

Note 3 Piping loads, stresses And moments are not taken into account

SIZE	B
1/8	10.7MM
1/4	14MM
3/8	17.5MM
1/2	21.6MM
3/4	27MM
1	33.8MM
1-1/4	42.4MM
1-1/2	48.5MM
2	61.2MM
2-1/2	74.19MM
3	90.17MM
4	115.8MM

Socket weld bore



SAME DAY DISPATCH -
ORDERS PLACED BEFORE 4:30PM



WEALTH OF
INDUSTRY KNOWLEDGE



ONE OF THE LARGEST
STOCKISTS IN THE UK