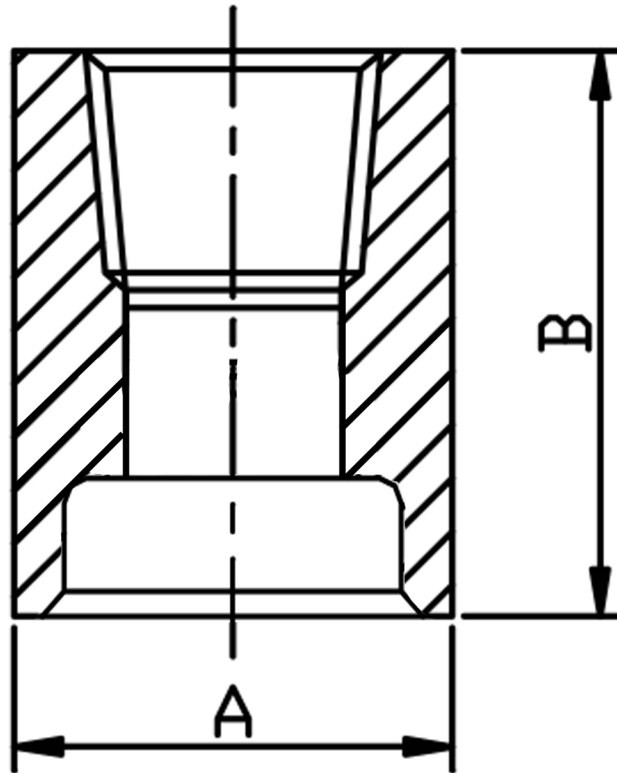


### FULL COUPLING SW/BSPT 316L



SIZE	PART No	D	L	Kg/100
1/4	3S04SW/BSPT	22	35	8.4
3/8	3S06SW/BSPT	26	38	11.1
1/2	3S08SW/BSPT	32	48	19.8
3/4	3S12SW/BSPT	38	51	27.7
1	3S16SW/BSPT	46	60	42.8

\*BSPT threaded to ISO 7-1

\*Dimensions to ANSI B16.11/BS3799

\*3000 LB rating

\*Sizes 1/8" to 1"

\*316L stainless steel

\*Larger sizes are available

\*\*DIMENSIONS SUBJECT TO CHANGE, PLEASE CONTACT US IF CRITICAL\*\*