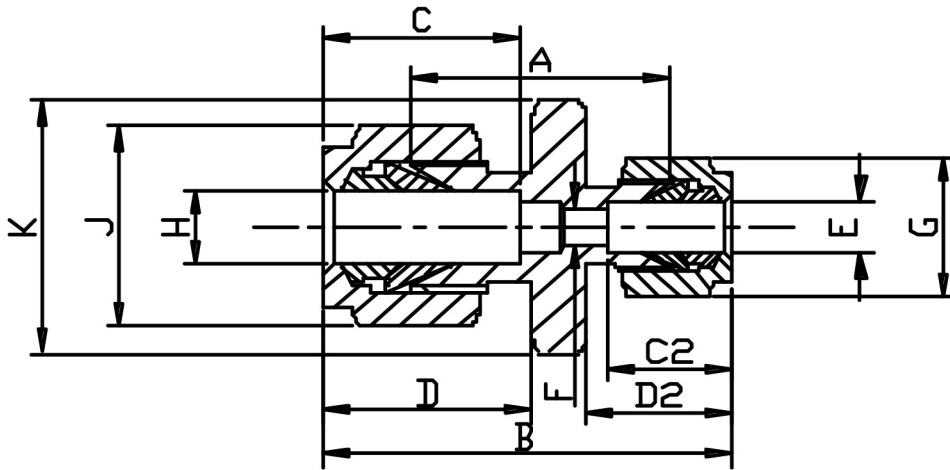


### REDUCING UNION (METRIC)



H TUBE	E TUBE	PART No	A	B	C	C2	D	D2	F	G HEX	J HEX	K HEX	Kg/100
6	4	<b>6mRU4</b>	25.4	41.0	16.1	14.5	18.5	16.9	2.4	13	14	11	3.1
8	6	<b>8mRU6</b>	27.4	43.8	16.9	16.1	19.3	18.5	4.8	13	16	14	4.2
10	6	<b>10mRU6</b>	28.6	45.0	17.7	16.1	20.1	18.5	4.7	13	19	17	5.2
12	6	<b>12mRU6</b>	29.4	47.8	23.5	16.1	22.7	18.5	4.7	13	22	22	7.3
12	10	<b>12mRU10</b>	31.0	50.0	23.5	17.7	22.7	20.1	8.0	19	22	22	9.0
15	12	<b>15MRU12</b>	31.8	52	25.1	23.5	22.7	22.7	8.0	22	24	24	11.1
16	12	<b>16mRU12</b>	31.8	53.4	25.1	23.5	22.7	22.7	9.5	22	22	24	12.3
20	12	<b>20mRU12</b>	33.3	54.9	25.1	23.5	22.7	22.7	9.5	22	25	29	15.1
22	15	<b>22MRU15</b>	37.3	54.9	25.1	23.5	27.0	22.7	9.5	22	32	29	18.7
25	12	<b>25mRU12</b>	37.3	60.8	31.8	23.5	27.0	22.7	9.5	22	30	38	22.2
25	16	<b>25mRU16</b>	37.3	60.8	31.8	25.1	27.0	22.7	12.7	25	38	38	23.8
25	20	<b>25mRU20</b>	37.3	60.8	31.8	25.1	27.0	22.7	12.7	30	38	38	24.6

\*316 Stainless Steel

\*Metric sizes 4mm to 25mm

\*Silver plated nuts

\*\*DIMENSIONS SUBJECT TO CHANGE, PLEASE CONTACT US IF CRITICAL\*\*