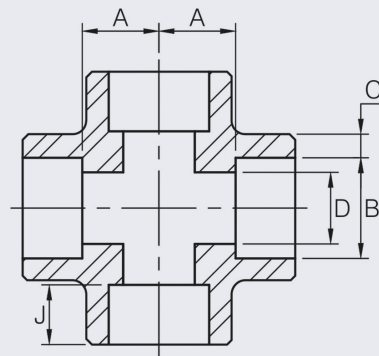


# Cross Socket Weld 3000LB (304/L)



NERO's range of Crosses are available in NPT and Socket Weld configurations.

Pressure rating up to 200 BAR (3000 PSI).

Full Material traceability is available and 3.1B certification can be provided upon request.

Socket Weld ends are to ASME B16.11-2016 / BS3799.

Larger sizes are available upon request.

SIZE	PRODUCT CODE	B	C		D	A	J (MIN)	KG EACH
			AVG	MIN				
1/4	3C04SW-304	14.2	3.78	3.30	9.3	11.0	9.5	0.13
3/8	3C06SW-304	17.6	4.01	3.50	12.6	13.5	9.5	0.20
1/2	3C08SW-304	21.8	4.67	4.09	15.8	15.5	9.5	0.35
3/4	3C12SW-304	27.2	4.90	4.27	21.0	19.0	12.5	0.47
1	3C16SW-304	33.9	5.69	4.98	26.7	22.5	12.5	0.73
1-1/4	3C20SW-304	42.7	6.07	5.28	35.1	27.0	12.5	1.12
1-1/2	3C24SW-304	48.8	6.35	5.54	40.9	32.0	12.5	1.58
2	3C32SW-304	61.2	6.93	6.04	52.5	38.0	16.0	2.25

**\*\* Dimensions subject to change - Please contact us if critical \*\***

## Other products you might like...

Crosses can also be supplied in BSPP & Socket Weld as part of our low pressure 150lb range



We also keep Crosses in NPT thread type 3000lb 316/L

