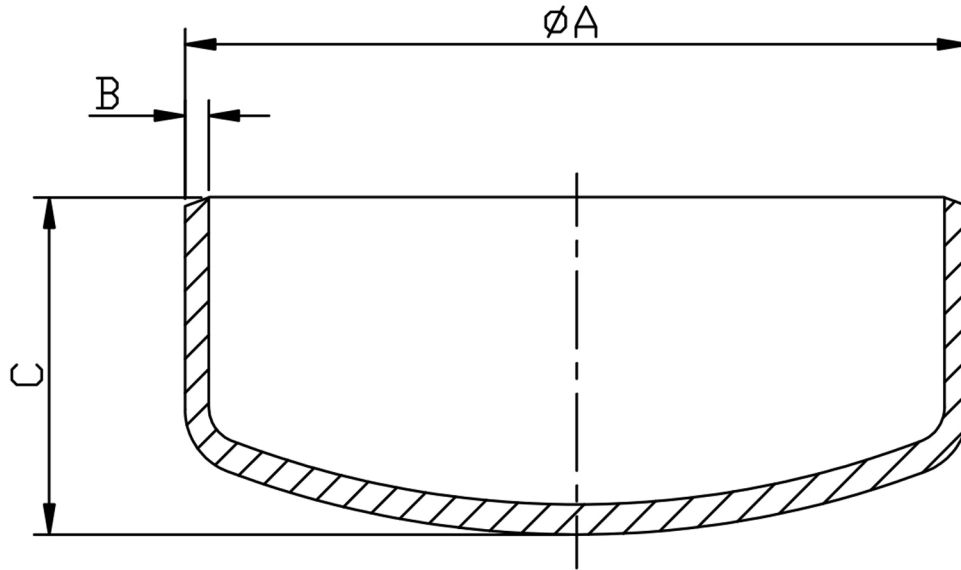


CAP SCH40 316/L



SIZE N.B	PART NUMBER	A	B	C	Kg/100
1/2	BC08/4	21.3	2.77	25.4	4.6
3/4	BC12/4	26.6	2.87	25.4	5.9
1	BC16/4	33.4	3.38	38.1	10.9
1 1/4	BC20/4	42.1	3.56	38.1	14.5
1 1/2	BC24/4	48.1	3.68	38.1	17.1
2	BC32/4	60.3	3.91	38.1	23.4
2 1/2	BC40/4	73.0	5.16	50.4	42.0
3	BC48/4	88.9	5.49	63.5	66.4
4	BC64/4	114.3	6.02	76.2	117.0
5	BC80/4	141.3	6.55	88.9	190.0
6	BC96/4	168.3	7.11	101.6	283.0
8	BC128/4	219.08	8.18	127.0	550.0

*Conforming to ASTM A403, ANSI B16.9, ANSI B16.28
 *316/L Stainless steel seamless
 *Schedule 40S Wall thickness
 *Sizes 1/2" to 8" Nominal Bore

DIMENSIONS SUBJECT TO CHANGE, PLEASE CONTACT US IF CRITICAL