

SIZE	CODE		DIMENSIONS			SIZE	CODE		DIMENSIONS		
	BSP	NPT	LENGTH	A	KG EACH		BSP	NPT	LENGTH	A	KG EACH
1/8	WN02-20	-	20MM	10.2	0.01	1-1/4	WN20-60	WN20N-60	60MM	42.4	0.09
1/8	WN02-40	-	40MM	10.2	0.01	1-1/4	WN20-80	WN20N-80	80MM	42.4	0.10
1/8	WN02-50	-	50MM	10.2	0.02	1-1/4	WN20-100	WN20N-100	100MM	42.4	0.25
1/4	WN04-40	-	40MM	13.5	0.02	1-1/4	WN20-130	-	130MM	42.4	0.33
1/4	WN04-50	WN04N-50	50MM	13.5	0.03	1-1/4	WN20-150	WN20N-150	150MM	42.4	0.37
1/4	WN04-60	WN04N-60	60MM	13.5	0.03	1-1/4	WN20-180	WN20N-180	180MM	42.4	0.45
1/4	WN04-80	WN04N-80	80MM	13.5	0.05	1-1/4	WN20-200	-	200MM	42.4	0.51
1/4	WN04-100	WN04N-100	100MM	13.5	0.06	1-1/4	WN20-250	-	250MM	42.4	0.64
1/4	WN04-130	WN04N-130	130MM	13.5	0.08	1-1/4	WN20-300	WN20N-300	300MM	42.4	0.78
1/4	WN04-150	WN04N-150	150MM	13.5	0.09	1-1/2	WN24-60	WN24N-60	60MM	48.3	0.09
1/4	WN04-180	-	180MM	13.5	0.10	1-1/2	WN24-80	WN24N-80	80MM	48.3	0.11
1/4	WN04-200	-	200MM	13.5	0.12	1-1/2	WN24-100	WN24N-100	100MM	48.3	0.28
1/4	WN04-250	-	250MM	13.5	0.15	1-1/2	WN24-130	WN24N-130	130MM	48.3	0.39
1/4	WN04-300	WN04N-300	300MM	13.5	0.18	1-1/2	WN24-150	WN24N-150	150MM	48.3	0.44
3/8	WN06-40	WN06N-40	40MM	17.2	0.03	1-1/2	WN24-180	WN24N-180	180MM	48.3	0.52
3/8	WN06-50	WN06N-50	50MM	17.2	0.03	1-1/2	WN24-200	WN24N-200	200MM	48.3	0.59
3/8	WN06-60	-	60MM	17.2	0.04	1-1/2	WN24-250	WN24N-250	250MM	48.3	0.75
3/8	WN06-80	-	80MM	17.2	0.05	1-1/2	WN24-300	WN24N-300	300MM	48.3	0.93
3/8	WN06-100	WN06N-100	100MM	17.2	0.07	2	WN32-60	WN32N-60	60MM	60.3	0.13
3/8	WN06-130	-	130MM	17.2	0.09	2	WN32-80	WN32N-80	80MM	60.3	0.27
3/8	WN06-150	WN06N-150	150MM	17.2	0.10	2	WN32-100	WN32N-100	100MM	60.3	0.38
3/8	WN06-180	-	180MM	17.2	0.14	2	WN32-130	WN32N-130	130MM	60.3	0.51
3/8	WN06-200	-	200MM	17.2	0.15	2	WN32-150	WN32N-150	150MM	60.3	0.60
3/8	WN06-250	-	250MM	17.2	0.19	2	WN32-180	WN32N-180	180MM	60.3	0.74
3/8	WN06-300	WN06N-300	300MM	17.2	0.24	2	WN32-200	WN32N-200	200MM	60.3	0.87
1/2	WN08-50	WN08N-50	50MM	21.3	0.05	2	WN32-250	WN32N-250	250MM	60.3	1.06
1/2	WN08-60	WN08N-60	60MM	21.3	0.07	2	WN32-300	WN32N-300	300MM	60.3	1.28
1/2	WN08-80	WN08N-80	80MM	21.3	0.09						
1/2	WN08-100	WN08N-100	100MM	21.3	0.10						
1/2	WN08-130	WN08N-130	130MM	21.3	0.13						
1/2	WN08-150	WN08N-150	150MM	21.3	0.15						
1/2	WN08-180	WN08N-180	180MM	21.3	0.19						
1/2	WN08-200	WN08N-200	200MM	21.3	0.21						
1/2	WN08-250	WN08N-250	250MM	21.3	0.27						
1/2	WN08-300	WN08N-300	300MM	21.3	0.32						
3/4	WN12-50	WN12N-50	50MM	26.9	0.04						
3/4	WN12-60	WN12N-60	60MM	26.9	0.05						
3/4	WN12-80	WN12N-80	80MM	26.9	0.11						
3/4	WN12-100	WN12N-100	100MM	26.9	0.12						
3/4	WN12-130	WN12N-130	130MM	26.9	0.16						
3/4	WN12-150	WN12N-150	150MM	26.9	0.19						
3/4	WN12-180	-	180MM	26.9	0.24						
3/4	WN12-200	WN12N-200	200MM	26.9	0.26						
3/4	WN12-250	-	250MM	26.9	0.34						
3/4	WN12-300	WN12N-300	300MM	26.9	0.41						
1	WN16-50	WN16N-50	50MM	33.7	0.08						
1	WN16-60	WN16N-60	60MM	33.7	0.10						
1	WN16-80	WN16N-80	80MM	33.7	0.14						
1	WN16-100	WN16N-100	100MM	33.7	0.18						
1	WN16-130	WN16N-130	130MM	33.7	0.25						
1	WN16-150	WN16N-150	150MM	33.7	0.29						
1	WN16-180	-	180MM	33.7	0.36						
1	WN16-200	WN16N-200	200MM	33.7	0.40						
1	WN16-250	WN16N-250	250MM	33.7	0.52						
1	WN16-300	-	300MM	33.7	0.61						

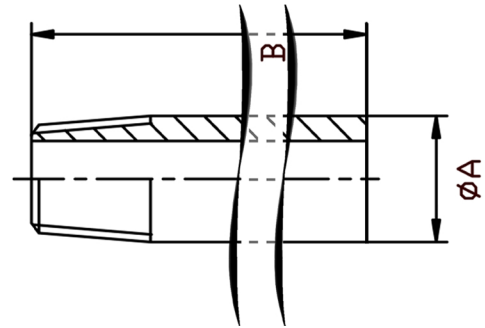


TABLE 1: PRESSURE-TEMPERATURE RATING

TEMPERATURE (°C)	NO-SHOCK MAXIMUM WORKING PRESSURE (Bar)
-20 to 40	50
100	50
150	35
200	25
220	20

Note 1 Pressure for Intermediate temperatures may be determined by the interpolation method
 Note 2 Temperatures indicated are those of the Internal fluid
 Note 3 Piping loads, stresses And moments are not taken into account

BSP threads are to ISO 228-1 and 7-1
 NPT threads are to ANSI B2.1
 Made from 316 (CF8M) stainless steel

NERO's range of 150Lb fittings are available threaded BSP and NPT, or with Socket weld end connections. They are made from high quality investment castings to ISO4144 or above.



SAME DAY DISPATCH -
ORDERS PLACED BEFORE 4:30PM



WEALTH OF
INDUSTRY KNOWLEDGE



ONE OF THE LARGEST
STOCKISTS IN THE UK

CALL: +44 (0)121 665 3900 EMAIL: INFO@NERO.CO.UK

UNIT 2, UNION RD, ANGLO AFRICAN INDUSTRIAL ESTATE, OLDBURY, WEST MIDLANDS B69 3EX

WWW.NERO.CO.UK