

SIZE	CODE		DIMENSIONS		KG EACH
	BSP	SW	A	B	
1/8	S02	S02SW	15	20	0.02
1/4	S04	S04SW	18.5	25	0.04
3/8	S06	S06SW	21.3	26	0.04
1/2	S08	S08SW	26.6	34	0.09
3/4	S12	S12SW	31.8	36	0.11
1	S16	S16SW	39.5	43	0.20
1-1/4	S20	S20SW	48.3	48	0.29
1-1/2	S24	S24SW	54.5	48	0.34
2	S32	S32SW	66.2	56	0.49
2-1/4	S36	-	76.2	38	0.39
2-1/2	S40	S40SW	82	65	0.74
3	S48	S48SW	95	71	0.98
4	S64	S64SW	121	83	1.24
5	S48	S48SW	151	96	0.98
6	S64	-	177	96	1.24

**** DIMENSIONS SUBJECT TO CHANGE - PLEASE CONTACT US IF CRITICAL ****

These Full Sockets are available threaded BSPP or with Socket weld end connections.

Suitable for higher pressures than our economical range

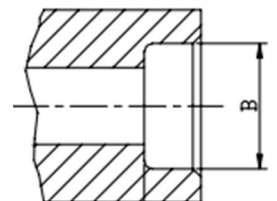
BSP threads are to ISO 228-1

Made from 316 stainless steel pipe

Maximum Working Pressure of 40 BAR

SIZE	B
1/8	10.7MM
1/4	14MM
3/8	17.5MM
1/2	21.6MM
3/4	27MM
1	33.8MM
1-1/4	42.4MM
1-1/2	48.5MM
2	61.2MM
2-1/2	74.19MM
3	90.17MM
4	115.8MM

Socket weld bore



5 STAR ★★★★★
CUSTOMER SERVICE



SAME DAY DISPATCH -
ORDERS PLACED BEFORE 4:30PM



WEALTH OF
INDUSTRY KNOWLEDGE



ONE OF THE LARGEST
STOCKISTS IN THE UK