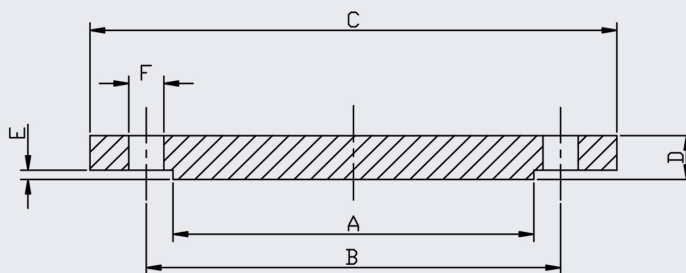
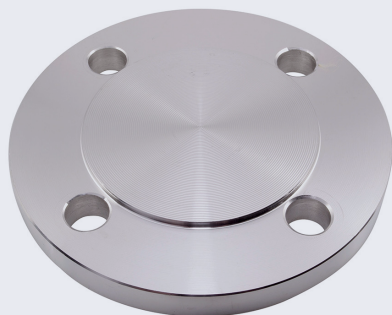


# PN6 Blind Flange (316/L and 304/L)



This flange conforms to EN 1092-1 and is available in both 316/L and 304/L.

Full material traceability is available and 3.1B certification can be provided upon request.

Bolt kit sizes shown in the above table are for bolting two flanges together including the thickness of a gasket. If using a wafer pattern valve, longer bolts will be required.

PIPE SIZE	DN	CODE 316	CODE 304	A	B	C	D	E	F	BOLT	KG EACH	BOLT KIT CODE
1/2	15	F680.5	F680.5-304	40	55	80	12	2	11	4XM10	0.72	BK01
3/4	20	F680.75	F680.75-304	50	65	90	14	2	11	4XM10	1.01	BK01
1	25	F681.0	F681.0-304	60	75	100	14	2	11	4XM10	1.23	BK01
1.25	32	F681.25	F681.25-304	70	90	120	16	2	14	4XM12	1.80	BK03
1.5	40	F681.5	F681.5-304	80	100	130	16	3	14	4XM12	2.09	BK03
2	50	F682.0	F682.0-304	90	110	140	16	3	14	4XM12	2.88	BK03
2.5	65	F682.5	F682.5-304	110	130	160	16	3	14	4XM12	3.66	BK03
3	80	F683.0	F683-304	128	150	190	18	3	16	4XM16	4.77	BK04
4	100	F684.0	F684.0-304	148	170	210	18	3	16	4XM16	5.65	BK04
5	125	F685.0	F685.0-304	178	200	240	20	3	18	8XM16	8.42	BK07
6	150	F686.0	F686.0-304	202	225	265	20	3	18	8XM16	10.40	BK07
8	200	F688.0	F688.0-304	258	280	320	22	3	20	8XM16	11.80	BK07

**\*\* Dimensions subject to change - Please contact us if critical \*\***

## Other products you might like...

We also keep Slip-On and Threaded flanges to this standard



We also keep Gaskets to suit all our flanges in both EPDM and Non-Asbestos materials

