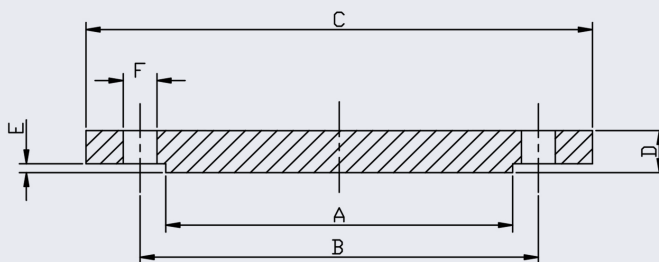
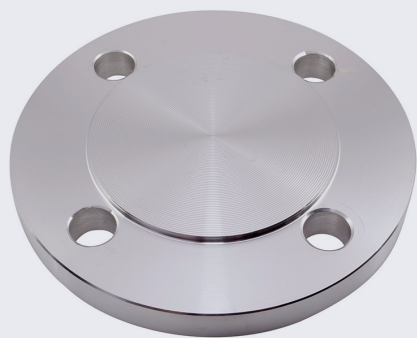


# PN16 Blind Flange (316/L and 304/L)



This flange conforms to EN 1092-1 and is available in 316/L and 304/L.

Full material traceability is available and 3.1B certification can be provided upon request.

Bolt kit sizes shown in the above table are for bolting two flanges together including the thickness of a gasket. If using a wafer pattern valve, longer bolts will be required.

PIPE SIZE	DN	CODE 316	CODE 304	A	B	C	D	E	F	BOLT	KG EACH	BOLT KIT CODE
1/2	15	F1680.5	F1680.5-304	45	65	95	16	2	14	4XM12	0.72	BK03
3/4	20	F1680.75	F1680.75-304	58	75	105	18	2	14	4XM12	1.01	BK03
1	25	F1681	F1681.0-304	68	85	115	18	2	14	4XM12	1.23	BK03
1.25	32	F1681.25	F1681.25-304	78	100	150	18	2	18	4XM16	1.80	BK04
1.5	40	F1681.5	F1681.5-304	88	110	150	18	3	18	4XM16	2.09	BK04
2	50	F1682.0	F1682.0-304	102	125	165	18	3	18	4XM16	2.88	BK04
2.5	65	F1682.5	F1682.5-304	122	145	185	18	3	18	4XM16	3.66	BK04
2.5	65	F1682.5/8 HOLE	F1682.5-304/8 HOLE	122	145	185	18	3	18	8XM16	3.66	BK05
3	80	F1683.0	F1683.0-304	138	160	200	20	3	18	8XM16	4.77	BK07
4	100	F1684.0	F1684.0-304	158	180	220	20	3	18	8XM16	5.65	BK07
5	125	F1685.0	F1685.0-304	188	210	250	22	3	18	8XM16	8.42	BK07
6	150	F1686.0	F1686.0-304	212	240	285	22	3	22	8XM20	10.40	BK10
8	200	F1688.0	F1088.0-304	268	295	340	24	3	22	12XM20	16.20	BK11
10	250	F16810.0	F10810.0-304	320	355	405	24	3	26	12XM24	26.60	BK15
12	300	F16812.0	F10812.0-304	378	410	460	32	4	26	12XM24	44.20	BK15
14	350	F16814.0	F16814.0-304	438	470	520	30	4	26	16XM24	47	BK21
16	400	F16816.0	F16816.0-304	490	525	580	32	4	30	16XM27	62.2	BK22

**\*\* Dimensions subject to change - Please contact us if critical \*\***

## Other products you might like...

We also keep Weld Neck, Threaded and Slip-On Flanges to this standard



We also keep Gaskets to suit all our Flanges in both EPDM and Non-Asbestos materials

