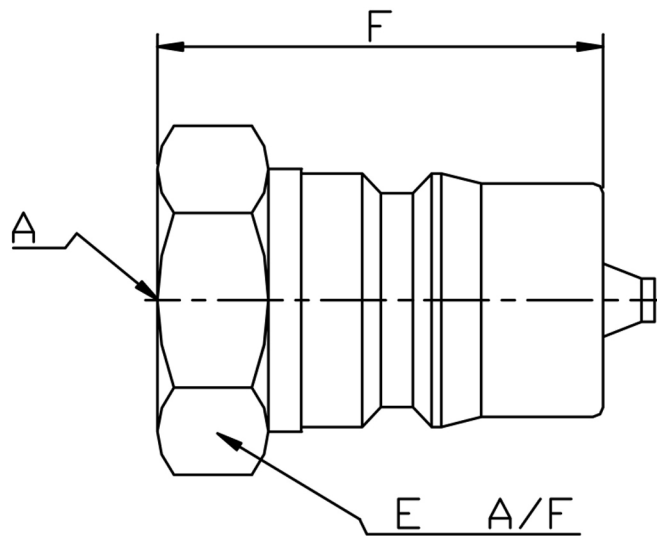
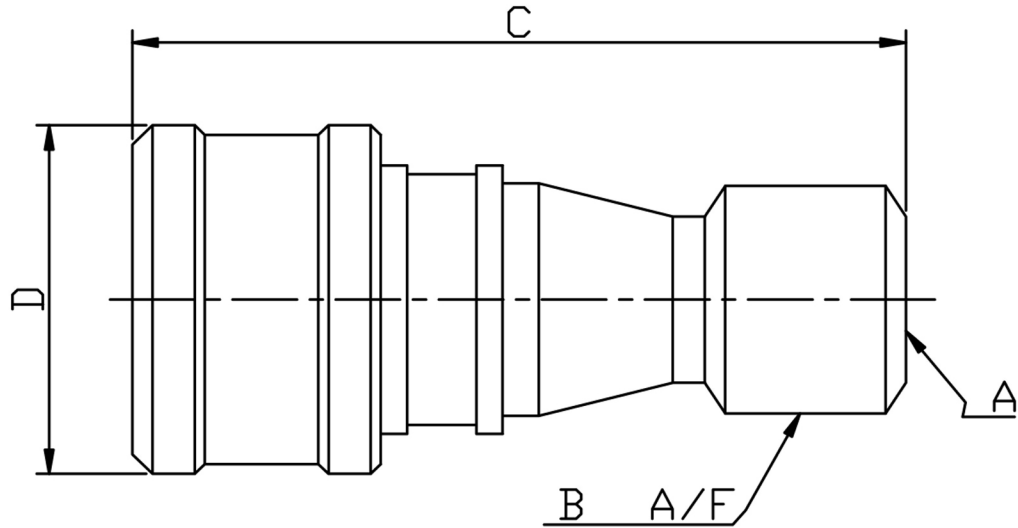


QUICK RELEASE COUPLING AND NIPPLE



SIZE BSPP	PART No COUPLING	PART No NIPPLE	B A/F	C	D	E A/F	F	WORKING PRESSURE BAR (4:1 SAFETY)	Kg/100 COUPLING	Kg/100 NIPPLE
1/8	QRC02	QRN02	17.45	51.30	23.62	14.22	35.05	280	12	3
1/4	QRC04	QRN04	19.05	57.15	28.45	19.05	38.35	380	15	4
3/8	QRC06	QRN06	25.40	65.28	35.05	22.35	44.20	260	23	7
1/2	QRC08	QRN08	31.75	74.93	44.45	32.26	51.05	260	41	13
3/4	QRC12	QRN12	38.10	88.39	54.10	35.05	59.18	210	68	20
1	QRC16	QRN16	44.45	105.16	63.50	41.40	71.37	210	104	34

- *303 STAINLESS STEEL
- *NITRILE SEAL
- *ISO SERIES B INTERCHANGEABLE
- *BSPP THREAD (NPT AVAILABLE)
- *HIGH FLOW RATE/LOW PRESSURE DROP
- *DIMENSIONS IN MM
- *WEIGHTS IN Kg/100

DIMENSIONS SUBJECT TO CHANGE, PLEASE CONTACT US IF CRITICAL