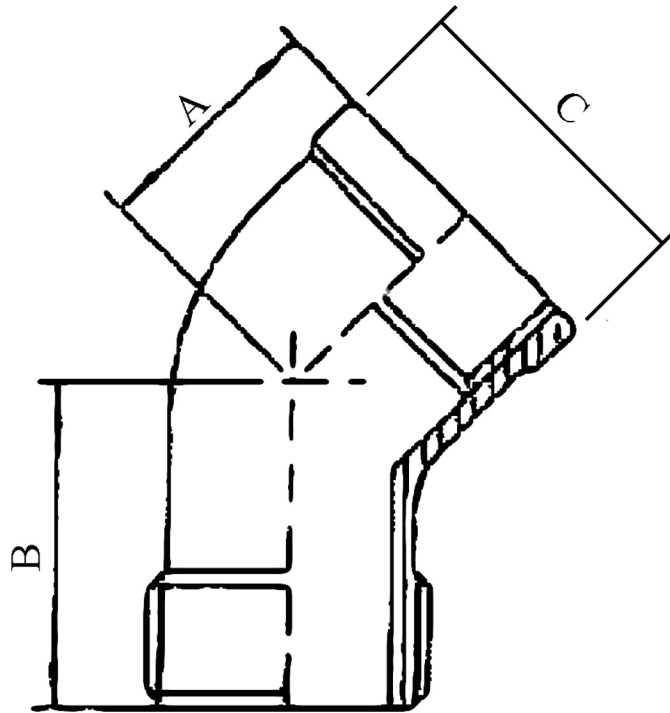


### 45° STREET ELBOW BSPT/BSP 316L



SIZE	PART No	A	B	C	Kg/100
1/8	SEA02	15	15.4	23	3.15
1/4	SEA04	17	17.6	27	3.85
3/8	SEA06	19	20.5	30	5.6
1/2	SEA08	21	20.5	30	9
3/4	SEA12	24	24	34.5	14.2
1	SEA16	29	30	39.5	18.2
1 1/4	SEA20	31	35.5	46.5	29.35
1 1/2	SEA24	35	38.5	49.5	36.8
2	SEA32	41	48	60.5	57.15

\*Pressure rating up to 20 BAR (300 PSI)

\*Female threads are BSPP (Parallel) to ISO 228-1

\*Male threads are BSPT (Taper) to ISO 7-1

\*316 CF8M stainless steel

\*Investment castings

\*Sizes 1/8" to 2"

**\*\*DIMENSIONS SUBJECT TO CHANGE, PLEASE CONTACT US IF CRITICAL\*\***