



SIZE	CODE		DIMENSIONS			SIZE	CODE		DIMENSIONS		
	BSP	NPT	LENGTH	A	KG EACH		BSP	NPT	LENGTH	A	KG EACH
1/8	WN02-20	-	20MM	10.2	0.01	1-1/4	WN20-60	WN20N-60	60MM	42.4	0.09
1/8	WN02-40	-	40MM	10.2	0.01	1-1/4	WN20-80	WN20N-80	80MM	42.4	0.10
1/8	WN02-50	-	50MM	10.2	0.02	1-1/4	WN20-100	WN20N-100	100MM	42.4	0.25
1/4	WN04-40	-	40MM	13.5	0.02	1-1/4	WN20-130	-	130MM	42.4	0.33
1/4	WN04-50	WN04N-50	50MM	13.5	0.03	1-1/4	WN20-150	WN20N-150	150MM	42.4	0.37
1/4	WN04-60	WN04N-60	60MM	13.5	0.03	1-1/4	WN20-180	WN20N-180	180MM	42.4	0.45
1/4	WN04-80	WN04N-80	80MM	13.5	0.05	1-1/4	WN20-200	-	200MM	42.4	0.51
1/4	WN04-100	WN04N-100	100MM	13.5	0.06	1-1/4	WN20-250	-	250MM	42.4	0.64
1/4	WN04-130	WN04N-130	130MM	13.5	0.08	1-1/4	WN20-300	WN20N-300	300MM	42.4	0.78
1/4	WN04-150	WN04N-150	150MM	13.5	0.09	1-1/2	WN24-60	WN24N-60	60MM	48.3	0.09
1/4	WN04-180	-	180MM	13.5	0.10	1-1/2	WN24-80	WN24N-80	80MM	48.3	0.11
1/4	WN04-200	-	200MM	13.5	0.12	1-1/2	WN24-100	WN24N-100	100MM	48.3	0.28
1/4	WN04-250	-	250MM	13.5	0.15	1-1/2	WN24-130	WN24N-130	130MM	48.3	0.39
1/4	WN04-300	WN04N-300	300MM	13.5	0.18	1-1/2	WN24-150	WN24N-150	150MM	48.3	0.44
3/8	WN06-40	WN06N-40	40MM	17.2	0.03	1-1/2	WN24-180	WN24N-180	180MM	48.3	0.52
3/8	WN06-50	WN06N-50	50MM	17.2	0.03	1-1/2	WN24-200	WN24N-200	200MM	48.3	0.59
3/8	WN06-60	-	60MM	17.2	0.04	1-1/2	WN24-250	WN24N-250	250MM	48.3	0.75
3/8	WN06-80	-	80MM	17.2	0.05	1-1/2	WN24-300	WN24N-300	300MM	48.3	0.93
3/8	WN06-100	WN06N-100	100MM	17.2	0.07	2	WN32-60	WN32N-60	60MM	60.3	0.13
3/8	WN06-130	-	130MM	17.2	0.09	2	WN32-80	WN32N-80	80MM	60.3	0.27
3/8	WN06-150	WN06N-150	150MM	17.2	0.10	2	WN32-100	WN32N-100	100MM	60.3	0.38
3/8	WN06-180	-	180MM	17.2	0.14	2	WN32-130	WN32N-130	130MM	60.3	0.51
3/8	WN06-200	-	200MM	17.2	0.15	2	WN32-150	WN32N-150	150MM	60.3	0.60
3/8	WN06-250	-	250MM	17.2	0.19	2	WN32-180	WN32N-180	180MM	60.3	0.74
3/8	WN06-300	WN06N-300	300MM	17.2	0.24	2	WN32-200	WN32N-200	200MM	60.3	0.87
1/2	WN08-50	WN08N-50	50MM	21.3	0.05	2	WN32-250	WN32N-250	250MM	60.3	1.06
1/2	WN08-60	WN08N-60	60MM	21.3	0.07	2	WN32-300	WN32N-300	300MM	60.3	1.28
1/2	WN08-80	WN08N-80	80MM	21.3	0.09	** DIMENSIONS SUBJECT TO CHANGE - PLEASE CONTACT US IF CRITICAL **					
1/2	WN08-100	WN08N-100	100MM	21.3	0.10						
1/2	WN08-130	WN08N-130	130MM	21.3	0.13						
1/2	WN08-150	WN08N-150	150MM	21.3	0.15						
1/2	WN08-180	WN08N-180	180MM	21.3	0.19						
1/2	WN08-200	WN08N-200	200MM	21.3	0.21						
1/2	WN08-250	WN08N-250	250MM	21.3	0.27						
1/2	WN08-300	WN08N-300	300MM	21.3	0.32						
3/4	WN12-50	WN12N-50	50MM	26.9	0.04						
3/4	WN12-60	WN12N-60	60MM	26.9	0.05						
3/4	WN12-80	WN12N-80	80MM	26.9	0.11						
3/4	WN12-100	WN12N-100	100MM	26.9	0.12						
3/4	WN12-130	WN12N-130	130MM	26.9	0.16						
3/4	WN12-150	WN12N-150	150MM	26.9	0.19						
3/4	WN12-180	-	180MM	26.9	0.24						
3/4	WN12-200	WN12N-200	200MM	26.9	0.26						
3/4	WN12-250	-	250MM	26.9	0.34						
3/4	WN12-300	WN12N-300	300MM	26.9	0.41						
1	WN16-50	WN16N-50	50MM	33.7	0.08						
1	WN16-60	WN16N-60	60MM	33.7	0.10						
1	WN16-80	WN16N-80	80MM	33.7	0.14						
1	WN16-100	WN16N-100	100MM	33.7	0.18						
1	WN16-130	WN16N-130	130MM	33.7	0.25						
1	WN16-150	WN16N-150	150MM	33.7	0.29						
1	WN16-180	-	180MM	33.7	0.36						
1	WN16-200	WN16N-200	200MM	33.7	0.40						
1	WN16-250	WN16N-250	250MM	33.7	0.52						
1	WN16-300	-	300MM	33.7	0.61						

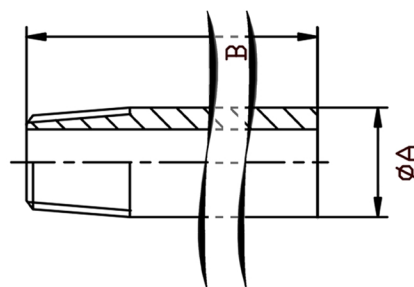


TABLE 1: PRESSURE-TEMPERATURE RATING

TEMPERATURE (°C)	NO-SHOCK MAXIMUM WORKING PRESSURE (Bar)
-20 to 40	50
100	50
150	35
200	25
220	20

Note 1 Pressure for Intermediate temperatures may be determined by the interpolation method
 Note 2 Temperatures indicated are those of the Internal fluid
 Note 3 Piping loads, stresses And moments are not taken into account

BSPT threads are to ISO 7-1
 NPT threads are to ANSI B2.1
 Made from 316/L stainless steel pipe
 Maximum Working Pressure of 50 BAR

NERO's range of Extended Weld Nipples are available threaded BSPT and NPT



SAME DAY DISPATCH -
ORDERS PLACED BEFORE 4:30PM



WEALTH OF
INDUSTRY KNOWLEDGE



ONE OF THE LARGEST
STOCKISTS IN THE UK

CALL: +44 (0)121 665 3900 EMAIL: INFO@NERO.CO.UK

UNIT 2, UNION RD, ANGLO AFRICAN INDUSTRIAL ESTATE, OLDBURY, WEST MIDLANDS B69 3EX

WWW.NERO.CO.UK