

CODE		ΦD (MM)	R (BSPT)	A	B	ΦP	H	WEIGHT (G)
PI-4MMC2BSPT	PI-4MMC2NPT	4	R1/8	8	21.4	9	10	8.5
PI-4MMC4BSPT	PI-4MMC4NPT		R1/4	11	23		14	9
PI-6MMC2BSPT	PI-6MMC2NPT	6	R1/8	8	21.7	11	12	8.5
PI-6MMC4BSPT	PI-6MMC4NPT		R1/4	11	23.2		14	18.5
PI-6MMC6BSPT	PI-6MMC6NPT		R3/8	11	23.2		17	29.5
PI-6MMC8BSPT	PI-6MMC8NPT		R1/2	14.5	28.5		22	57
PI-8MMC2BSPT	PI-8MMC2NPT	8	R1/8	8	26.7	13.7	14	13.5
PI-8MMC4BSPT	PI-8MMC4NPT		R1/4	11	24.7			15.5
PI-8MMC6BSPT	PI-8MMC6NPT		R3/8	11	24.7		17	26.5
PI-8MMC8BSPT	PI-8MMC8NPT		R1/2	14.5	28.6		22	54
PI-10MMC4BSPT	PI-10MMC4NPT	10	R1/4	11	29.5	15.5	17	22.5
PI-10MMC6BSPT	PI-10MMC6NPT		R3/8	11	26.1			24.5
PI-10MMC8BSPT	PI-10MMC8NPT		R1/2	14.5	28.5		22	49.5
PI-12MMC4BSPT	PI-12MMC4NPT	12	R1/4	11	31.5	18.7	19	27.5
PI-12MMC6BSPT	PI-12MMC6NPT		R3/8	11	28			32.5
PI-12MMC8BSPT	PI-12MMC8NPT		R1/2	14.5	28.5		22	44

**** DIMENSIONS SUBJECT TO CHANGE - PLEASE CONTACT US IF CRITICAL ****

FEATURES

- Fast Connection
- High Temperature up to 150°C
- Small, compact design
- Good resistance to chemical corrosive environments
- Food safety
- Allow full flow through Hose / Tubing

MATERIAL CONTRUCTION

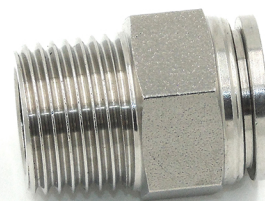
- Metal Body - SS 316
- Push Button - SS 316
- Claws - SS301
- Seals - FKM

SPECIFICATIONS

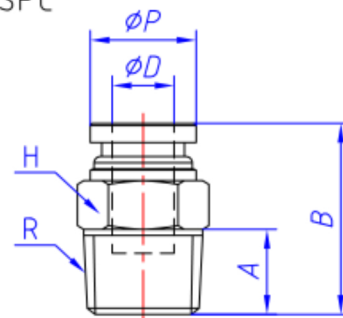
- Operating Pressure - 0-20 BAR
- Operating Temperature - -20 to 150°C
- Vacuum Rating - To 28" Hg
- Application - Air, Vacuum, Steam Beverage, Oil
- Types - Straight

FITTINGS ADVANTAGE

- Easy to push in and pull out tubes
- Raw material is SS316L and seal is FKM, for high temp and corrosive environments
- 100% tested, no leakage



SSPC



We also stock a range of Push-In fittings to work alongside these fittings



Applications:

- Pneumatics
- Air brake, fuel and lube applications
- Production lines (industrial and automotive)