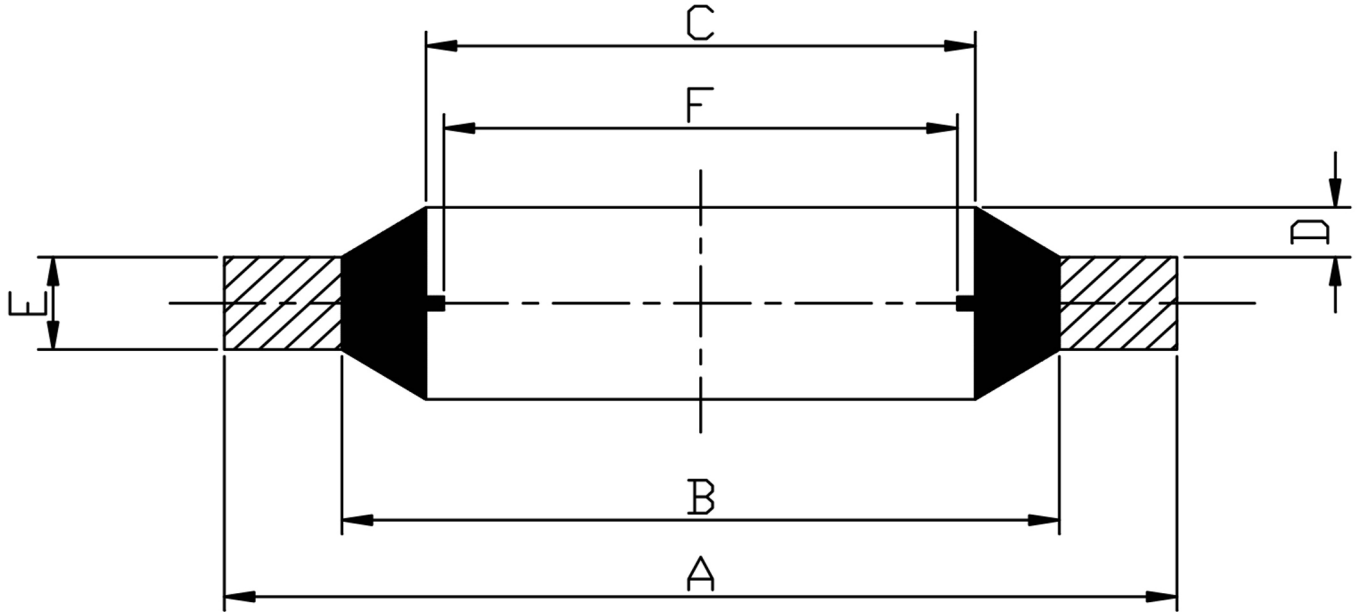


### BONDED WASHER

316 STAINLESS STEEL / NITRILE RUBBER



SIZE BSPP	PART No	A	B	C	D	E	F	Kg/100
1/8	BW02	15.88	11.84	10.37	0.25/0.51	2.03	8.56	0.15
1/4	BW04	20.57	15.21	13.74	0.25/0.51	2.03	11.45	0.25
3/8	BW06	23.80	18.75	17.28	0.25/0.51	2.03	14.96	0.29
1/2	BW08	28.58	23.01	21.54	0.25/0.51	2.49	18.64	0.46
3/4	BW12	34.93	28.53	27.05	0.25/0.51	2.49	24.13	0.62
1	BW16	42.80	36.88	33.89	0.25/0.51	3.38	30.30	0.79
1 1/4	BW20	52.38	45.93	42.93	0.25/0.51	3.38	38.96	1.04
1 1/2	BW24	58.60	51.39	48.44	0.25/0.51	3.38	44.86	1.30
2	BW32	73.03	63.63	60.58	0.25/0.51	3.38	56.67	2.14

\*316 STAINLESS STEEL  
 \*DIMENSIONS IN MM  
 \*WEIGHTS IN Kg/100

\*\*DIMENSIONS SUBJECT TO CHANGE, PLEASE CONTACT US IF CRITICAL\*\*