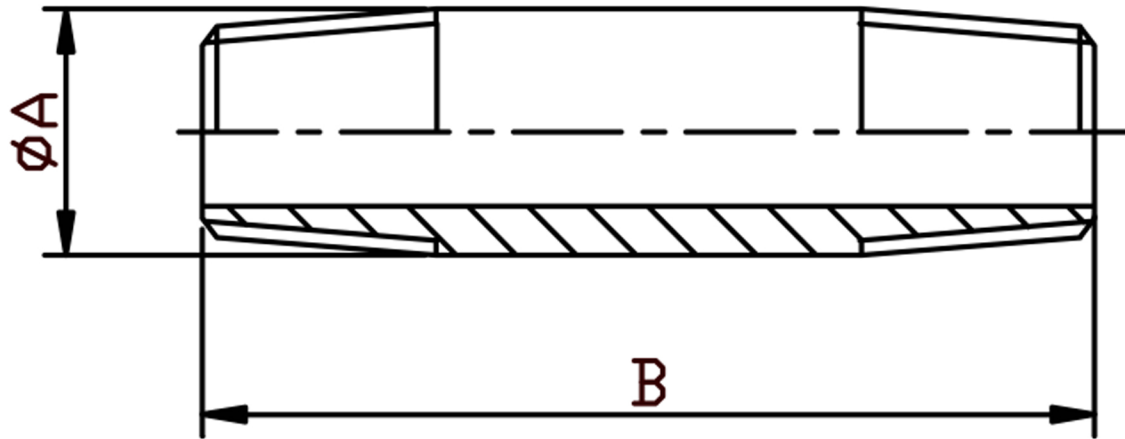


BARREL NIPPLE NPT 316L



SIZE	PART No	A	B	Kg/100
1/8	BN02N	10.2	30	1.29
1/4	BN04N	13.5	30	2.65
3/8	BN06N	17.2	40	3.5
1/2	BN08N	21.3	60	7.28
3/4	BN12N	26.9	60	9.44
1	BN16N	33.7	60	14.34
1-1/4	BN20N	42.4	80	24.42
1-1/2	BN24N	48.3	80	28.06
2	BN32N	60.3	100	49.52
2-1/2	BN40N	76.1	100	63.85
3	BN48N	88.9	120	97.01
4	BN64N	114.3	120	142.73

*Pressure rating up to 50 BAR (750 PSI)

*Threads are NPT to ANSI B2.1

*316L stainless steel

*Manufactured from pipe

*Sizes 1/8" to 4"

DIMENSIONS SUBJECT TO CHANGE, PLEASE CONTACT US IF CRITICAL