

PIPE SIZE	DN	SCHEDULE 40	SCHEDULE 10	A	B	C	D	E	F SCH10	F SCH40	G	H	J	K	L	M	BOLT	KG EACH	BOLT KIT CODE
1/2	15	F300WN0.5	F300WN0.5/S10	35	66.5	21.3	38.1	95.2	17.1	15.8	14.2	52.3	3	15.7	1.6	6.4	4XM12	0.79	BK03
3/4	20	F300WN0.75	F300WN0.75/S10	42.9	82.6	26.7	47.8	117.3	22.5	20.93	15.7	57.2	3	19.1	1.6	6.4	4XM16	1.33	BK06
1	25	F300WN1.0	F300WN1.0/S10	50.8	88.9	33.4	53.8	124	27.9	26.94	17.5	62	3	19.1	1.6	6.4	4XM16	1.67	BK06
1.25	32	F300WN1.25	F300WN1.25/S10	63.5	98.6	42.2	63.5	133.4	36.6	35.04	19.1	65	3	19.1	1.6	6.4	4XM16	2.13	BK06
1.5	40	F300WN1.5	F300WN1.5/S10	73.2	114.3	48.3	69.9	155.4	42.7	40.9	20.6	68.3	3	22.4	1.6	6.4	4XM20	3.03	BK17
2	50	F300WN2.0	F300WN2.0/S10	91.9	127	60.3	84	165.1	54.8	52.51	22.4	69.9	3	19.1	1.6	6.4	8XM16	3.58	BK07
2.5	65	F300WN2.5	F300WN2.5/S10	104.6	149.4	73	100.1	190.5	66.9	62.71	25.4	76.2	3	22.4	1.6	6.4	8XM20	5.44	BK12
3	80	F300WN3.0	F300WN3.0/S10	127	168.1	88.9	117.3	209.6	82.8	77.92	28.4	79.2	3	22.4	1.6	6.4	8XM20	7.28	BK12
4	100	F300WN4.0	F300WN4.0/S10	157.2	200.2	114.3	146.1	253	108.2	102.26	31.8	85.9	3	22.4	1.6	6.4	8XM20	11.18	BK12
5	125	F300WN5.0	F300WN5.0/S10	185.7	235	141.3	177.8	279.4	134.5	128.2	35.1	98.6	6.5	22.4	1.6	6.4	8XM20	15.00	BK12
6	150	F300WN6.0	F300WN6.0/S10	215.9	269.7	168.3	206.2	317.5	161.5	154.06	36.6	98.6	6.5	22.4	1.6	6.4	12XM20	20.18	BK09

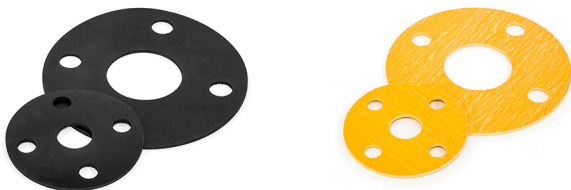
**** DIMENSIONS SUBJECT TO CHANGE - PLEASE CONTACT US IF CRITICAL ****

This flange conforms to ANSI/ASME B16.5 and is available in 316/L.

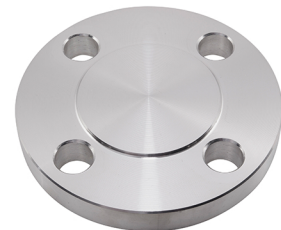
Full material traceability is available and 3.1B certification can be provided upon request.

Bolt kit sizes shown in the above table are for bolting two flanges together including the thickness of a gasket. If using a wafer pattern valve, longer bolts will be required.

We also keep Gaskets to suit all our flanges in both EPDM and Non-Asbestos materials



We also keep Slip-On, Blind and Threaded flanges to this standard



5 STAR ★★★★★
CUSTOMER SERVICE



SAME DAY DISPATCH -
ORDERS PLACED BEFORE 4:30PM



WEALTH OF
INDUSTRY KNOWLEDGE



ONE OF THE LARGEST
STOCKISTS IN THE UK

CALL: +44 (0)121 665 3900 EMAIL: INFO@NERO.CO.UK

UNIT 2, UNION RD, ANGLo AFRICAN INDUSTRIAL ESTATE, OLDBURY, WEST MIDLANDS B69 3EX

WWW.NERO.CO.UK