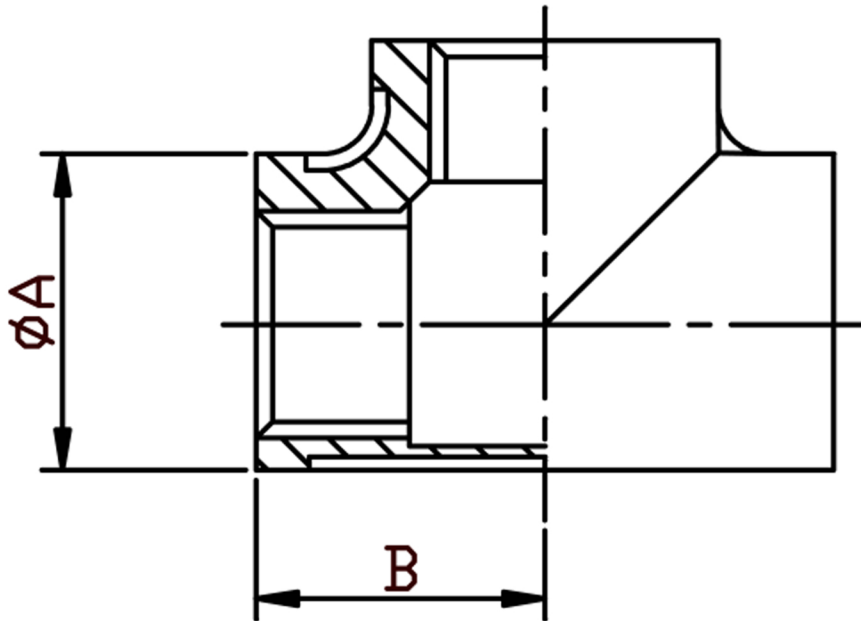


EQUAL TEE NPT 316L



SIZE	PART No	A	B	Kg/100
1/8	T02N	13.5	14	2.08
1/4	T04N	17	18.5	6.95
3/8	T06N	21.4	20.8	5.30
1/2	T08N	25.5	25	8.30
3/4	T12N	31.3	27.5	11.20
1	T16N	38.7	33	19.30
1-1/4	T20N	48	40	32.02
1-1/2	T24N	53.7	43	36.49
2	T32N	66.7	52	62.53
2-1/2	T40N	84	61	108.95
3	T48N	98	70.5	171.90
4	T64N	125	97	304.20

*Pressure rating up to 20 BAR (300 PSI)

*Threads are NPT to ANSI B2.1

*316 CF8M stainless steel

*Investment castings

*Sizes 1/8" to 4"

DIMENSIONS SUBJECT TO CHANGE, PLEASE CONTACT US IF CRITICAL