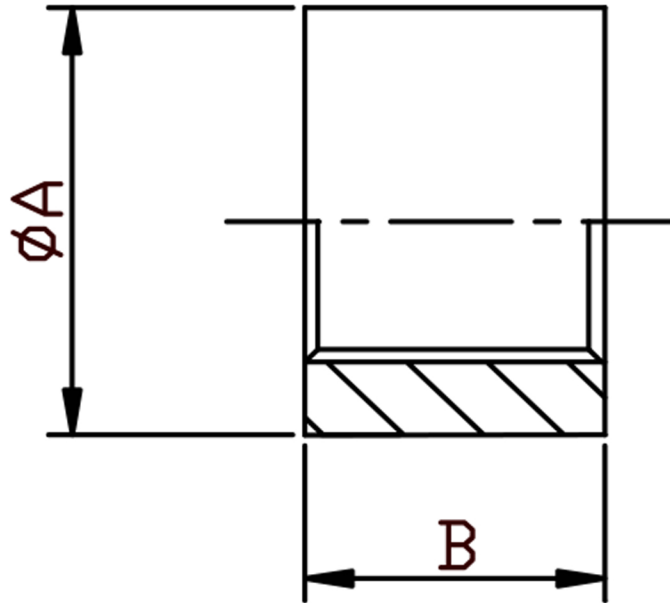


HALF SOCKET NPT 316L



SIZE	PART No	A	B	Kg/100
1/4	HS04N	18.5	11	2.02
3/8	HS06N	21.3	12	2.34
1/2	HS08N	26.6	15	4.36
3/4	HS12N	31.8	17	5.4
1	HS16N	39.5	20	10.16
1-1/4	HS20N	48.3	22	14.79
1-1/2	HS24N	54.5	22	17.51
2	HS32N	66.2	26	25.09

*Pressure rating up to 10 BAR (150 PSI)

*Threads are NPT to ANSI B2.1

*316L stainless steel

*Manufactured from castings

*Sizes 1/4" to 2"

DIMENSIONS SUBJECT TO CHANGE, PLEASE CONTACT US IF CRITICAL