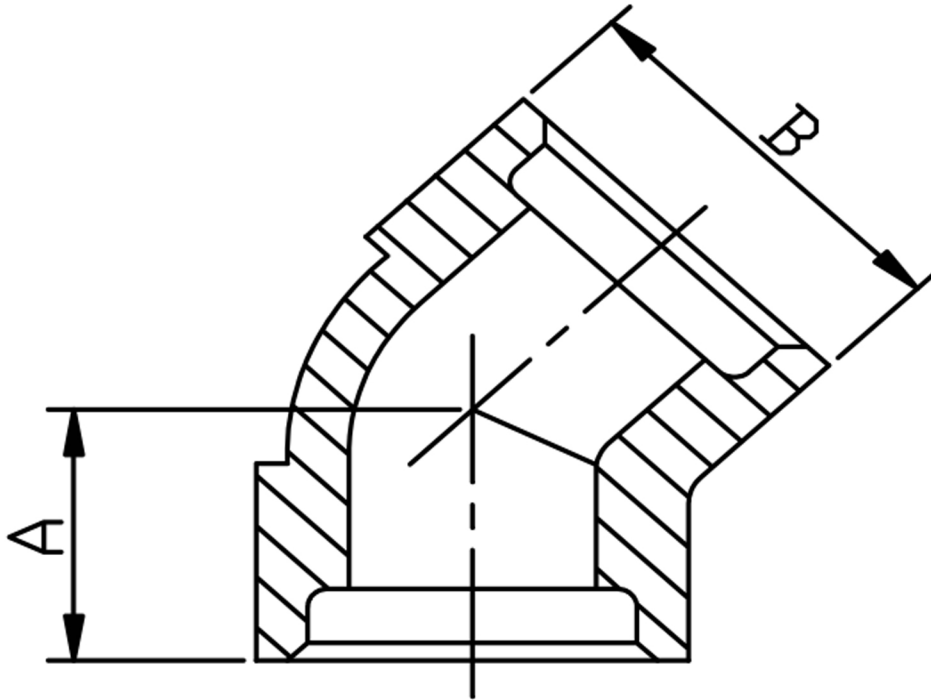


45° ELBOW SOCKET WELD 316L



SIZE	PART No	A	B	Kg/100
1/4	3EA04SW	18	22	12.0
3/8	3EA06SW	18	25	9.2
1/2	3EA08SW	21	33	21.7
3/4	3EA12SW	25	38	25.1
1	3EA16SW	27	46	42.1
1-1/4	3EA20SW	30	56	60.2
1-1/2	3EA24SW	33	62	82.5
2	3EA32SW	41	75	121.8

*Socket weld ends (SW)

*Dimensions to ANSI B16.11/BS3799

*3000 LB rating

*Sizes 1/4" to 2"

*316L stainless steel

*Larger sizes are available

****DIMENSIONS SUBJECT TO CHANGE, PLEASE CONTACT US IF CRITICAL****