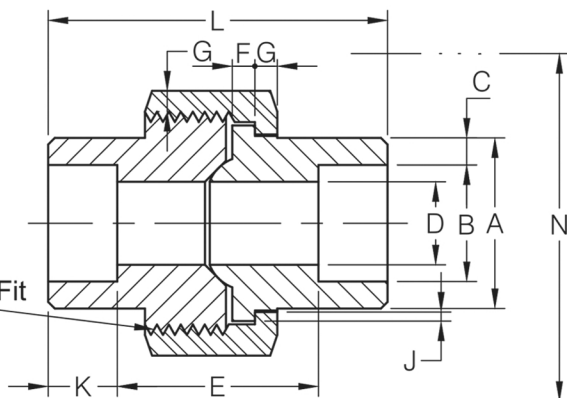


H-Thrd's
Minimum 4 Full Thrd's
Engagement Class 2A / 2B Fit
ANSI B1.1



		DIMENSIONS												
SIZE	PRODUCT CODE	PIPE END A (MIN)	SOCKET BORE DIA	SOCKET WALL C (MIN)	WATER WAY BORE D*	LAYING LENGTH E*	MALE FLANGE F (MIN)	NUT G (MIN)	THREADS PER 25.4MM H	BEARING J (MIN)	DEPTH OF SOCKET K (MIN)	LENGTH ASSEM. NOM. L	CLEAR ASSEM. NOM. N	KG EACH
1/2	6UC08SW	37.1	22.23 / 21.72	5.18	12.55 / 11.02	31.8 / 25.4	4.06	4.06	11	1.68	9.7	56.9	66.0	0.60
3/4	6UC12SW	45.5	27.56 / 27.05	6.05	16.31 / 14.78	34.3 / 26.2	4.57	4.45	11	1.85	12.7	62.0	78.7	0.91
1	6UC16SW	54.9	34.29 / 33.78	6.93	21.46 / 19.94	40.6 / 32.5	5.33	5.21	10	2.13	12.7	71.1	94.0	1.57

* Upper and Lower values for each size are the respective maximum and minimum dimensions

**** DIMENSIONS SUBJECT TO CHANGE - PLEASE CONTACT US IF CRITICAL ****

NERO's range of Cone Seat Unions are available in NPT and Socket Weld configurations - ASME B16.11-2016

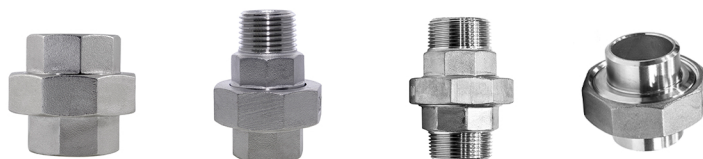
Pressure rating up to 400 BAR (6000 PSI)

Full Material traceability is available and 3.1B certification can be provided upon request

Socket Weld ends are to ASME B16.11-2016 / BS3799

Larger sizes are available upon request

Cone Seat Unions can also be supplied as part of our low pressure 150lb range in Female, Male/Female, Male/Male and Butt Weld ends



We also keep Cone Seat Unions with BSPT, NPT and Socket Weld ends 3000lb 316/L



5 STAR ★★★★★
CUSTOMER SERVICE



SAME DAY DISPATCH -
ORDERS PLACED BEFORE 4:30PM



WEALTH OF
INDUSTRY KNOWLEDGE



ONE OF THE LARGEST
STOCKISTS IN THE UK

CALL: +44 (0)121 665 3900 EMAIL: INFO@NERO.CO.UK

UNIT 2, UNION RD, ANGLO AFRICAN INDUSTRIAL ESTATE, OLDBURY, WEST MIDLANDS B69 3EX

WWW.NERO.CO.UK